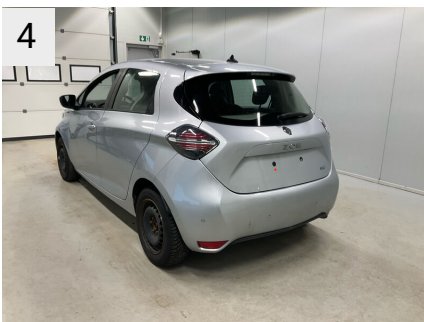


# TILSTANDSRAPPORT

## Stamdata

|                     |            |              |                   |                |                    |
|---------------------|------------|--------------|-------------------|----------------|--------------------|
| Registreringsnummer | CY81273    | Stelnummer   | VF1AG000066550044 |                |                    |
| Mærke               | RENAULT    | Model        | Zoe               | Version        | R110 - 52 kWh Aut. |
| Karrosseritype      | Hatchback  | Farve        | Grå               | Reg. dato      | 01-03-2021         |
| Drivkraft           | El         | Drivlinje    | Front wheel drive | Geartype       | Automatisk         |
| KM. stand           | 127086     | Antal nøgler | 2                 | Kontraktnummer | 5116379            |
| Afliveringsdato     | 19-03-2026 |              |                   |                |                    |

## Udvendige billeder



## Dæk og mønster

| Position     | Mærke       | Størrelse | Slidbane | Dæktype |
|--------------|-------------|-----------|----------|---------|
| Venstre, For | Continental | 185/65-15 | 04 mm    | Vinter  |
| Venstre, Bag | Continental | 185/65-15 | 05 mm    | Vinter  |
| Højre, Bag   | Continental | 185/65-15 | 04 mm    | Vinter  |
| Højre, For   | Continental | 185/65-15 | 04 mm    | Vinter  |

## Ekstra hjul

Ekstrahjul tilstede Ja

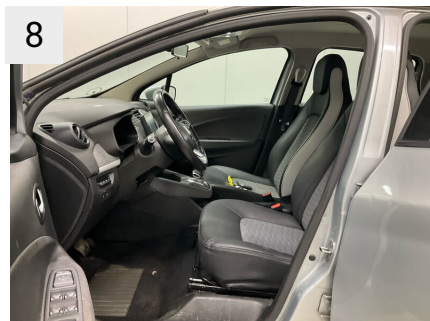
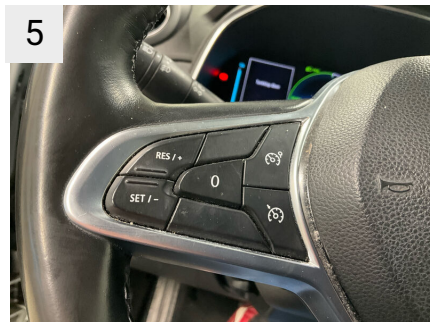
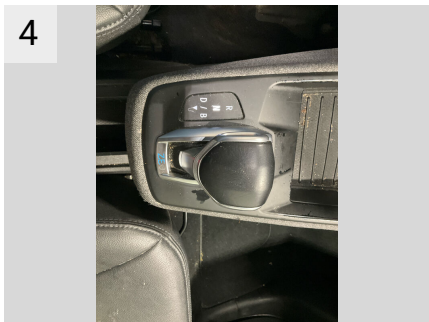
| Position   | Mærke | Dæktype |
|------------|-------|---------|
| Ekstrahjul |       |         |

## Reservedæk og rep. kit

Rep. kit tilstede Ikke relevant Reservehjul tilstede Ikke relevant

| Position    | Mærke | Størrelse | Slidbane |
|-------------|-------|-----------|----------|
| Reservehjul |       | /-        |          |

## Præsentationsbilleder



13



## Mangler / Tilstand

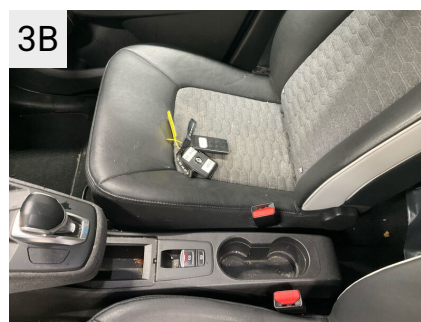
| Ref | Sted                         | Del                      | Type              | Handling |
|-----|------------------------------|--------------------------|-------------------|----------|
| #1  | Lille folie                  | Lille folie              | Ikke afmonteret   | K5       |
| #2  | Ladekabel                    | Ladekabel                | Ikke tilstede     | K5       |
| #3  | Udvendig vask og støvsugning | Bil indvendigt/udvendigt | Mangler rengøring | K3       |



3  
 Sted Udvendig vask og støvsugning  
 Del Bil indvendigt/udvendigt  
 Type Mangler rengøring



3A  
 Sted Udvendig vask og støvsugning  
 Del Bil indvendigt/udvendigt  
 Type Mangler rengøring



3B  
 Sted Udvendig vask og støvsugning  
 Del Bil indvendigt/udvendigt  
 Type Mangler rengøring

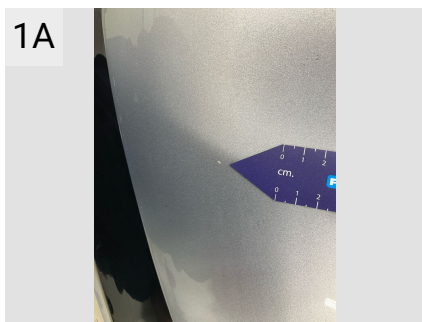
## Skader

| Ref | Sted        | Del                     | Type           | Handling |
|-----|-------------|-------------------------|----------------|----------|
| #1  | Motorhjelm  | Hjelm                   | Stenslag flere | K3       |
| #2  | Front       | Forkofanger             | Ridser         | K4       |
| #3  | V. fordør   | Dør                     | Bulet/Ridset   | K4       |
| #4  | V. bagdør   | Dør                     | Bulet/Ridset   | K4       |
| #5  | V. panel    | Indstigning Venstre For | Bulet/Ridset   | K3       |
| #6  | Interiør    | Sædebetræk, Venstre For | Hul            | K5       |
| #7  | V. bagskærm | Skærm                   | Ridser         | K3       |
| #8  | Bagkofanger | Kofanger                | Bulet/Ridset   | K4       |

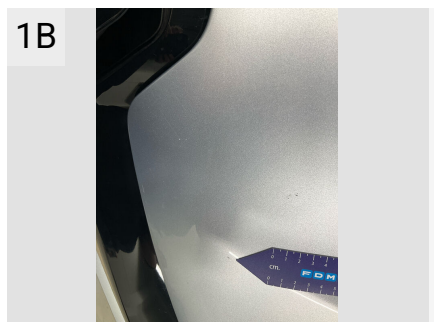
|     |             |             |              |    |
|-----|-------------|-------------|--------------|----|
| #9  | H. bagskærm | Skærm       | Bulet/Ridset | K4 |
| #10 | H. bagdør   | Dør         | Bulet/Ridset | K4 |
| #11 | H. panel    | Panel liste | Ridser       | K4 |
| #12 | H. fordør   | Dør         | Ridser       | K4 |
| #13 | H. fordør   | Håndtag     | Ridser       | K4 |
| #14 | H. forskærm | Skærm       | Ridser       | K4 |



**1**  
 Sted Motorhjel  
 Del Hjel  
 Type Stenslag flere



**1A**  
 Sted Motorhjel  
 Del Hjel  
 Type Stenslag flere



**1B**  
 Sted Motorhjel  
 Del Hjel  
 Type Stenslag flere



**1C**  
 Sted Motorhjel  
 Del Hjel  
 Type Stenslag flere



**2**  
 Sted Front  
 Del Forkofanger  
 Type Ridser



**2A**  
 Sted Front  
 Del Forkofanger  
 Type Ridser



2B  
 Sted Front  
 Del Forkofanger  
 Type Ridser



2C  
 Sted Front  
 Del Forkofanger  
 Type Ridser



2D  
 Sted Front  
 Del Forkofanger  
 Type Ridser



3  
 Sted V. fordør  
 Del Dør  
 Type Bulet/Ridset



3A  
 Sted V. fordør  
 Del Dør  
 Type Bulet/Ridset



3B  
 Sted V. fordør  
 Del Dør  
 Type Bulet/Ridset



3C  
 Sted V. fordør  
 Del Dør  
 Type Bulet/Ridset



3D  
 Sted V. fordør  
 Del Dør  
 Type Bulet/Ridset



3E  
 Sted V. fordør  
 Del Dør  
 Type Bulet/Ridset



3F

Sted V. fordør  
 Del Dør  
 Type Bulet/Ridset



4

Sted V. bagdør  
 Del Dør  
 Type Bulet/Ridset



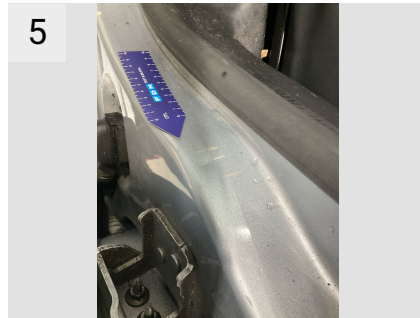
4A

Sted V. bagdør  
 Del Dør  
 Type Bulet/Ridset



4B

Sted V. bagdør  
 Del Dør  
 Type Bulet/Ridset



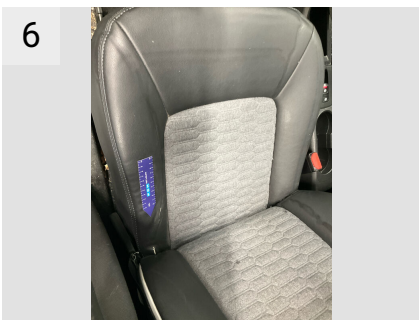
5

Sted V. panel  
 Del Indstigning Venstre For  
 Type Bulet/Ridset



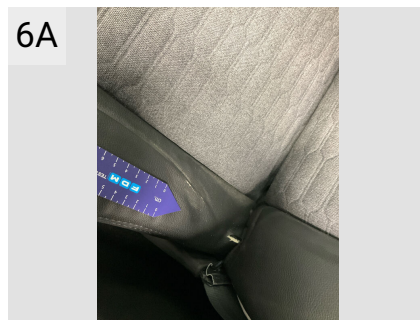
5A

Sted V. panel  
 Del Indstigning Venstre For  
 Type Bulet/Ridset



6

Sted Interiør  
 Del Sædebetræk, Venstre For  
 Type Hul



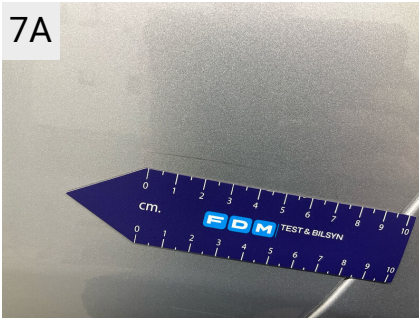
6A

Sted Interiør  
 Del Sædebetræk, Venstre For  
 Type Hul



7

Sted V. bagskærm  
 Del Skærm  
 Type Ridser



7A  
 Sted V. bagskærm  
 Del Skærm  
 Type Ridser



8  
 Sted Bagkofanger  
 Del Kofanger  
 Type Bulet/Ridset



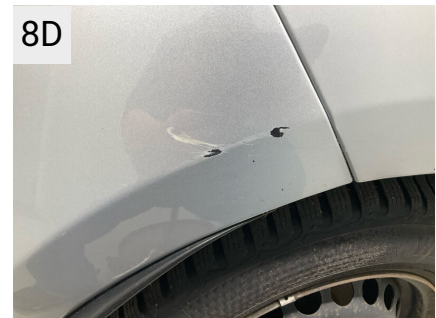
8A  
 Sted Bagkofanger  
 Del Kofanger  
 Type Bulet/Ridset



8B  
 Sted Bagkofanger  
 Del Kofanger  
 Type Bulet/Ridset



8C  
 Sted Bagkofanger  
 Del Kofanger  
 Type Bulet/Ridset



8D  
 Sted Bagkofanger  
 Del Kofanger  
 Type Bulet/Ridset



9  
 Sted H. bagskærm  
 Del Skærm  
 Type Bulet/Ridset



9A  
 Sted H. bagskærm  
 Del Skærm  
 Type Bulet/Ridset



10  
 Sted H. bagdør  
 Del Dør  
 Type Bulet/Ridset



10A  
 Sted H. bagdør  
 Del Dør  
 Type Bulet/Ridset



10B  
 Sted H. bagdør  
 Del Dør  
 Type Bulet/Ridset



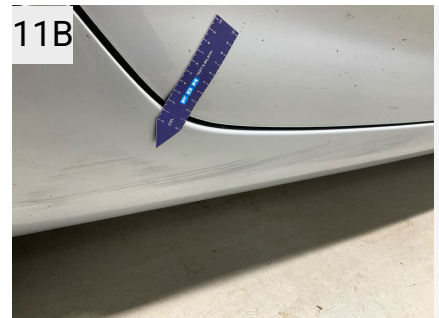
10C  
 Sted H. bagdør  
 Del Dør  
 Type Bulet/Ridset



11  
 Sted H. panel  
 Del Panel liste  
 Type Ridser



11A  
 Sted H. panel  
 Del Panel liste  
 Type Ridser



11B  
 Sted H. panel  
 Del Panel liste  
 Type Ridser



12  
 Sted H. fordør  
 Del Dør  
 Type Ridser



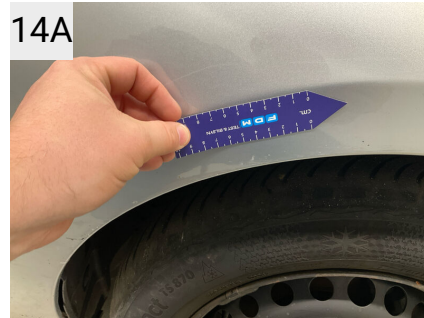
12A  
 Sted H. fordør  
 Del Dør  
 Type Ridser



13  
 Sted H. fordør  
 Del Håndtag  
 Type Ridser



|      |             |
|------|-------------|
| Sted | H. forskærm |
| Del  | Skærm       |
| Type | Ridser      |



|      |             |
|------|-------------|
| Sted | H. forskærm |
| Del  | Skærm       |
| Type | Ridser      |



|      |             |
|------|-------------|
| Sted | H. forskærm |
| Del  | Skærm       |
| Type | Ridser      |



|      |             |
|------|-------------|
| Sted | H. forskærm |
| Del  | Skærm       |
| Type | Ridser      |

## Evt. Mekaniske fejl

Bemærkninger vedr. mekaniske fejl

## Fabriksudstyr

2. USB-Anschluss in  
Mittelkonsole  
Airbag Beifahrerseite  
abschaltbar

Sonnenblenden mit  
Spiegel (beleuchtet)  
Steckdose (12V-Anschluß)

Sitzheizung vorn  
Sitzheizung vorn links

|  |  |   |
|--|--|---|
| Airbag Fahrer-/Beifahrerseite                      | Tagfahrlicht LED   | Sitzheizung hinten (2.Sitzreihe)                          |
| Anti-Blockier-System (ABS)                         | Türgriffe außen Wagenfarbe                                   | Sitzbezug / Polsterung: Stoff                             |
| Anti-Submarining-Airbag im Fond                    | Untersteuerungskontrolle (USC)                               | Kopfstützen hinten  |
| Antischlupfregelung (ASR)                          | Verglasung hinten abgedunkelt (Privacy Glass)                | Fensterheber elektrisch vorn                              |
| Außenspiegel elektr. verstell- und heizbar         | Warnanlage für Sicherheitsgurte                              | Fensterheber elektrisch hinten                            |
| Außenspiegel Wagenfarbe                            | Wegfahrsperr   | Fensterheber elektrisch vorn + hinten                     |
| Bordcomputer                                       | Zentralverriegelung / Startanlage Handsfree Entry & Drive    | Fensterheber elektr. mit Impulsgeber links vorn           |
| Bremsassistent                                     | Fahrassistenten-System: Aktiver Notbrems-Assistent           | Fensterheber elektr. mit Impulsgeber                      |
| Eco Mode (Fahrmodussschalter)                      | Klimaautomatik mit Luftfeuchtigkeits- und Sonnenstandssensor | Zentralverriegelung mit Fernbedienung                     |
| Elektr. Bremskraftverteilung                       | Komfort-Paket  | Fernbedienung für Zentralverriegelung                     |
| Elektromotor 51 kW                                 | Metallic-Lackierung  | Zentralverriegelung / Startanlage Keyless Entry & Drive   |
| Elektron. Stabilitäts-Programm (ESP)               | Navigations-Paket  | Zentralverriegelung / Startanlage Handsfree Entry & Drive |
| Fahrassistenten-System: Berganfahr-Assistent (HSA) | Visio-Paket  | Türdichtungen mit Staubschutz                             |
| Fahrassistenten-System: Fernlichtassistent         | Winter-Paket   | Sicherheitsgurte vorn höhenverstellbar                    |
| Fahrassistenten-System: Spurhalteassistent Aktiv   | Model: ZOE LIMOUSINE B10                                     | Warnanlage für Sicherheitsgurte                           |
| Fahrassistenten-System: Spurwechsel-Warnsystem     | Linkslenker  | Innenspiegel mit Ablendautomatik                          |
| Fahrzeug mit HV-Kauf-Batterie                      | Fahrzeug mit HV-Kauf-Batterie                                | Sonnenblenden mit Spiegel (beleuchtet)                    |
| Frontscheibe Akustikglas                           | Modellpflege   | Isofix-Aufnahmen für Kindersitz                           |
| Fußmatten  | Ausstattungs-Niveau EB2 (siehe Typenschild B-Säule)          | Isofix-Aufnahmen für Kindersitz an Beifahrersitz          |
| Geräuschsimulator (Außensound)                     | Fzg. mit größerer Reichweite                                 | Rückfahrkamera  |
| Geschwindigkeits-Regelanlage (Tempomat)            | Visio-Paket  | Anti-Blockier-System (ABS)                                |
| Getriebe für Elektrofahrzeug                       | Komfort-Paket  | Fahrassistenten-System: Aktiver Notbrems-Assistent        |
| Gurtstraffer                                       | Winter-Paket   | Bremsassistent  |
| Heckleuchten LED                                   | Navigations-Paket  | Fahrassistenten-System: Spurhalteassistent Aktiv          |

|  |  |  |
|--|--|--|
| Heckscheibe heizbar                                  | Metallic-Lackierung  | LM-Felgen 6,5x16 (Aero Tronic)   |
| HV-Batterie 52 kWh                                   | Sonderlackierung Highland Grau Metallic                            | Reifen-Reparaturkit  |
| Isofix-Aufnahmen für Kindersitz                      | Außenspiegel elektr. verstellbar                                   | Lenkrad heizbar  |
| Isofix-Aufnahmen für Kindersitz an Beifahrersitz     | Außenspiegel elektr. verstell- und heizbar                         | Lenkrad (Leder 2-farbig)   |
| Karosserie: 5-türig                                  | Außenspiegel Wagenfarbe  | Untersteuerungskontrolle (USC)   |
| Kombiinstrument digital (10,0 Zoll)                  | Blinkleuchte in Außenspiegel integriert                            | Elektron. Stabilitäts-Programm (ESP)   |
| Ladekabel mit Typ2/Typ2 (Mode 3)                     | Blinkleuchten LED in Außenspiegel integriert                       | Antriebsart: Frontantrieb  |
| Leistungsvariante R110                               | Nebelscheinwerfer LED  | HV-Batterie 52 kWh   |
| Lenkrad (Leder) + Schalt-/Wählhebelgriff Leder       | Fahrassistenz-System: Fernlichtassistent                           | Getriebe Automatik - elektronisch (4-Stufen)   |
| Lenkrad (Leder-Optik)                                | Fahrassistenz-System: Verkehrszeichenerkennung                     | Elektromotor: Renault  |
| Lenksäule (Lenkrad) höhenverstellbar                 | Licht- und Regensensor   | Elektromotor 51 kW   |
| Lenksäule (Lenkrad) längsverstellbar                 | Tagfahrlicht LED, C-förmig   | Motorcode 5AQ  |
| Licht- und Regensensor                               | Verglasung getönt  | Leistungsvariante R110   |
| LM-Felgen  | Heckscheibe heizbar  | Steuer-AV Tagfahrlicht 02  |
| Mittelkonsole  | Multimedia-System Easy Link mit Navigationssystem (Touchscreen 7") | Tågelygter   |
| Modellpflege   | Bordcomputer   | Parkeringsensor bag  |
| Parkbremse elektrisch mit Auto-Hold-Funktion         | Schaltpunktanzeige   | Michelin Energy™ E.V. dæk med lav rullemodstand  |
| Raucher-Paket  | Einparkhilfe vorn und hinten                                       | Trådløs lader til mobiltelefon   |
| Reifen-Reparaturkit                                  | Reifendruck-Kontrollsystem   | Vognbaneassistent (Lane keeping assist)  |
| Reifendruck-Kontrollsystem                           | Geschwindigkeits-Regelanlage (Tempomat)                            | EASY LINK 7" Multimediesystem med smartphone-delning, Bluetooth (kompatibel med Apple Carplay), DAB+, og traditionel FM/AM-radio |
| Scheinwerfer Full-LED mit LED-Signatur (Pure Vision) | Airbag Beifahrerseite  | Håndfrit nøglekort   |
| Seitenairbag vorn                                    | Seitenairbag vorn  | Regn- og lyssensor   |
| Servolenkung elektrisch                              | Seitenairbag   | Aktivt nødbremsesystem med registrering af fodgængere og cyklister "City brake"  |

|  |  |   |
|--|--|---|
| Sicherheitsgurte vorn höhenverstellbar | Airbag Beifahrerseite abschaltbar                            | Citypakke: Parkeringsensor foran + bakkamera  |
| Sitzbezug / Polsterung: Stoff          | Klimaautomatik mit Luftfeuchtigkeits- und Sonnenstandssensor | Metallak, Grå - Highland  |
| Sitze vorn mit Anti-Submarining-Airbag | Kältemittel R 1234 YF  | 7" Multimediesystem med navigation, Indeholder kun navigation, da 7" Multimediesystem er standard |

INDEPENDENT

# BATTERY CERTIFICATE



CERTIFICATE NUMBER: E9FDD7B6-A82B-43A3-B9B8-6DDDCD16B29F

VEHICLE

**BRAND:** Renault  
**MODEL:** Zoe - 52 kWh

**MILEAGE:** 127,086 km  
**VIN:** VF1AG000066550044

**EXECUTED BY:** FDM-AYVENS-DF-FREDERICA

**DATE AND TIME:**  
19/03/2026, 13:24

RESULTS

## STATE OF HEALTH (SOH)

91.3 %

ENERGY

47kWh | 52kWh



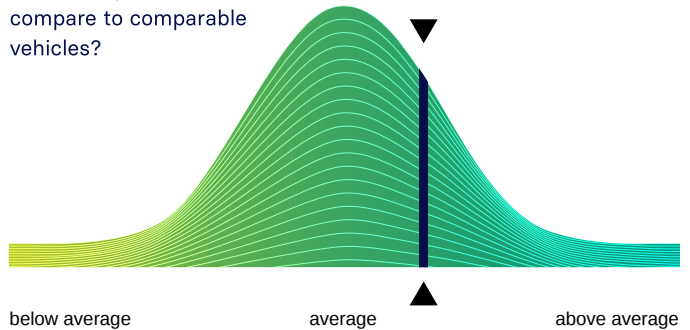
WLTP RANGE

361km | 395km

RATING

## BENCHMARKING

How does your vehicle compare to comparable vehicles?



CHECKS

- Battery Management System (BMS) ✓
- Battery Sensor ✓
- Battery Measurements ✓
- Battery Cell Voltages ✓
- Vehicle Communication ✓



EVALUATION

## EXCELLENT HEALTH - NO ABNORMALITIES DETECTED

Based on the detailed battery diagnostics performed with the AVILOO FLASH Test, we hereby certify that the drive battery of this vehicle is in excellent condition.

The drive battery is therefore officially AVILOO Certified.

*Marcus Berger*

Dr. Marcus Berger, CEO



**ENERGY**

|          | Gross   | Net (Nominal) | Usable  |
|----------|---------|---------------|---------|
| Current: | 50.0kWh | 47.5kWh       | 47.5kWh |
| New:     | 54.7kWh | 52.0kWh       | 52.0kWh |

**RANGE**

|          | WLTP      | Typical | Individual |
|----------|-----------|---------|------------|
| Current: | 353-361km | 284km   | 254km      |
| New:     | 386-395km | 311km   | 278km      |

**EXECUTION PROTOCOL**

|                              |                 |
|------------------------------|-----------------|
| <b>AVILOO Box connected.</b> | <b>13:23:58</b> |
| FLASH Test started.          | ✓               |
| Vehicle detected.            | ✓               |
| Starting data acquisition.   | ✓               |
| Finished data acquisition.   | ✓               |
| Analyzing data.              | ✓               |
| Analysis completed.          | ✓               |

**SENSORS**

|                      |   |
|----------------------|---|
| Voltage Sensor       | ✓ |
| Current Sensor       | ✓ |
| Temperature Sensors  | ✓ |
| Cell Voltage Sensors | ✓ |

**BMS**

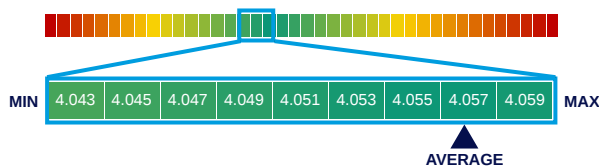
|                             | Value | Status |
|-----------------------------|-------|--------|
| BMS State of Charge (SoC)*: | 90%   |        |
| SoC calculation accuracy:   |       | ✓      |
| BMS State of Health (SoH)*: | 96%   |        |
| SoH calculation accuracy:   |       | ✓      |

**MEASUREMENTS**

|                     | Min    | Max    | Delta | Status |
|---------------------|--------|--------|-------|--------|
| Battery Temperature | 7.4°C  | 8.4°C  | 1.0°C | ✓      |
| Cell Voltage        | 4.043V | 4.059V | 16mV  | ✓      |
| Pack Voltage        | 389.1V |        |       |        |
| Average Current     | -0.8A  |        |       |        |

**CELL VOLTAGES DIAGRAM**

|         | 1     | 2     | 3     | 4     | 5     | 6     | 7     | 8     | 9     | 10    | 11    | 12    | 13    | 14    | 15    | 16    | 17    | 18    | 19    | 20    |
|---------|-------|-------|-------|-------|-------|-------|-------|-------|-------|-------|-------|-------|-------|-------|-------|-------|-------|-------|-------|-------|
| 1 - 20  | 4.046 | 4.044 | 4.043 | 4.044 | 4.044 | 4.044 | 4.044 | 4.045 | 4.059 | 4.057 | 4.056 | 4.056 | 4.057 | 4.059 | 4.057 | 4.059 | 4.056 | 4.057 | 4.056 | 4.056 |
| 21 - 40 | 4.056 | 4.057 | 4.055 | 4.057 | 4.057 | 4.059 | 4.057 | 4.056 | 4.056 | 4.059 | 4.057 | 4.057 | 4.056 | 4.056 | 4.055 | 4.059 | 4.057 | 4.057 | 4.056 | 4.057 |
| 41 - 60 | 4.056 | 4.055 | 4.056 | 4.057 | 4.056 | 4.056 | 4.055 | 4.056 | 4.055 | 4.055 | 4.052 | 4.055 | 4.056 | 4.056 | 4.056 | 4.055 | 4.055 | 4.057 | 4.056 | 4.057 |
| 61 - 80 | 4.057 | 4.059 | 4.056 | 4.056 | 4.055 | 4.056 | 4.056 | 4.055 | 4.056 | 4.057 | 4.056 | 4.059 | 4.055 | 4.057 | 4.055 | 4.056 | 4.056 | 4.057 | 4.056 | 4.057 |
| 81 - 96 | 4.056 | 4.057 | 4.057 | 4.057 | 4.056 | 4.057 | 4.055 | 4.057 | 4.057 | 4.059 | 4.059 | 4.059 | 4.059 | 4.057 | 4.057 | 4.059 | /     | /     | /     | /     |



\*The values shown here were not calculated by AVILOO but correspond to the values read out from the battery management system (BMS) and were calculated by the manufacturer. AVILOO therefore assumes no liability for their accuracy.

**DISCLAIMER:** The test result includes the currently calculated state of health (SoH) of the drive battery. The determination is based on data provided by the vehicle. These are evaluated by AVILOO's algorithms using statistical and analytical models. Manipulation of the data in the control unit leads to an incorrect result. The indicated SoH has a technically induced fluctuation range (deviation) of no more than 3% in at least 95% of reference measurements. It should be noted that this tolerance applies to the SoH determination at the cell level and not to the SoH of the entire battery. This is because the state of charge of individual cells may vary, which can negatively affect the current SoH of the battery. However, this can be compensated by the Battery Management System (BMS) or during a calibration. The result reflects the condition of the battery at the time of the test. No conclusions can be drawn about the future state of health of the battery from this. Statements about mechanical damage or external influences are not part of this diagnosis.