

# TILSTANDSRAPPORT

## Stamdata

Registreringsnummer	DC36288	Stelnummer	YV1UZK5VDN1941506		
Mærke	VOLVO	Model	XC60	Version	B4 Aut.
Karosseritype	Stationcar	Farve	Grå	Reg. dato	31-08-2021
Drivkraft	Diesel	Drivlinje	Front wheel drive	Gearstype	Automatisk
KM. stand	211204	Antal nøgler	2	Kontraktnummer	5124796
Afleveringsdato	25-03-2026				

## Udvendige billeder



## Dæk og mønster

Position	Mærke	Størrelse	Slidbane	Dæktype
Venstre, For	Goodyear	235/55-19	05 mm	Vinter
Venstre, Bag	Goodyear	235/55-19	05 mm	Vinter
Højre, Bag	Goodyear	235/55-19	05 mm	Vinter
Højre, For	Goodyear	235/55-19	05 mm	Vinter

## Ekstra hjul

Ekstrahjul tilstede Nej

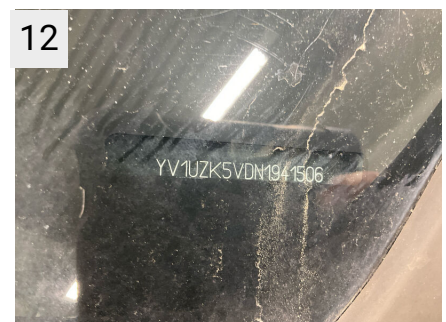
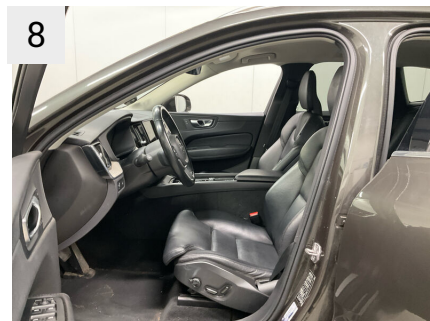
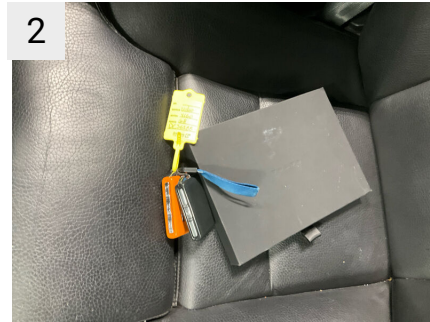
Position	Mærke	Dæktype
Ekstrahjul		

## Reservedæk og rep. kit

Rep. kit tilstede Ikke relevant Reservehjul tilstede Ikke relevant

Position	Mærke	Størrelse	Slidbane
Reservehjul		/-	

## Præsentationsbilleder



## Mangler / Tilstand

Ref	Sted	Del	Type	Handling
-----	------	-----	------	----------

## Skader

Ref	Sted	Del	Type	Handling
#1	Forrude	Rude	Stenslag	K4
#2	Motorhjelm	Hjelm	Stenslag flere	K3
#3	Front	Forkofanger	Ridser	K4
#4	V. forskærm	Skærm	Ridser	K4
#5	V. fordør	Dør	Ridser	K4
#6	V. panel	Indstigning Venstre For	Ridser	K3
#7	Bagkofanger	Kofanger	Ridser	K4
#8	Bagklap	Bagagerumsklap	Ridser	K4



Sted	Forrude
Del	Rude
Type	Stenslag



Sted	Forrude
Del	Rude
Type	Stenslag



Sted	Motorhjelm
Del	Hjelm
Type	Stenslag flere



**2A**

Sted	Motorhjel
Del	Hjel
Type	Stenslag flere



**3**

Sted	Front
Del	Forkofanger
Type	Ridser



**3A**

Sted	Front
Del	Forkofanger
Type	Ridser



**3B**

Sted	Front
Del	Forkofanger
Type	Ridser



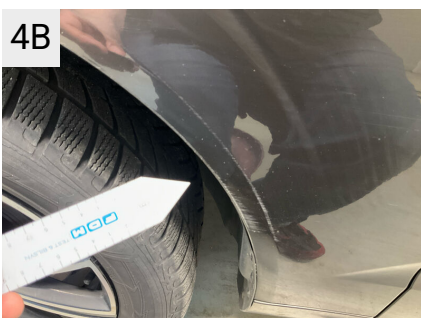
**4**

Sted	V. forskærm
Del	Skærm
Type	Ridser



**4A**

Sted	V. forskærm
Del	Skærm
Type	Ridser



**4B**

Sted	V. forskærm
Del	Skærm
Type	Ridser



**4C**

Sted	V. forskærm
Del	Skærm
Type	Ridser

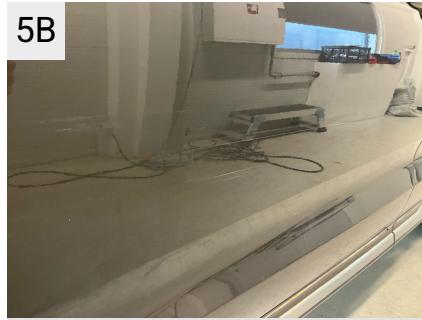


**5**

Sted	V. fordør
Del	Dør
Type	Ridser



5A  
 Sted V. fordør  
 Del Dør  
 Type Ridser



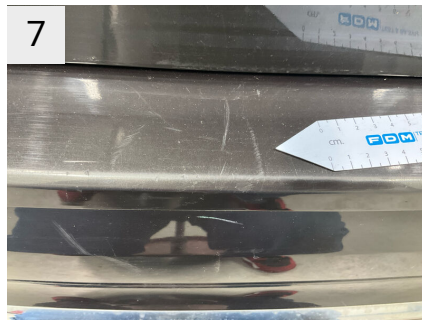
5B  
 Sted V. fordør  
 Del Dør  
 Type Ridser



6  
 Sted V. panel  
 Del Indstigning Venstre For  
 Type Ridser



6A  
 Sted V. panel  
 Del Indstigning Venstre For  
 Type Ridser



7  
 Sted Bagkofanger  
 Del Kofanger  
 Type Ridser



7A  
 Sted Bagkofanger  
 Del Kofanger  
 Type Ridser



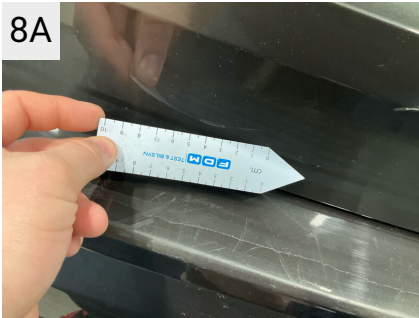
7B  
 Sted Bagkofanger  
 Del Kofanger  
 Type Ridser



7C  
 Sted Bagkofanger  
 Del Kofanger  
 Type Ridser



8  
 Sted Bagklap  
 Del Bagagerumsklap  
 Type Ridser



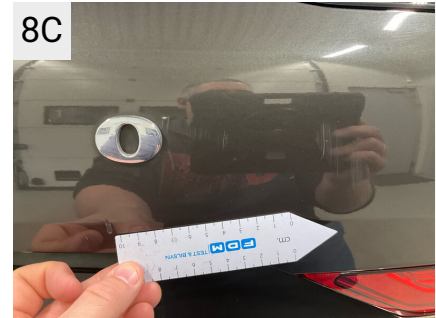
8A

Sted	Bagklap
Del	Bagagerumsklap
Type	Ridser



8B

Sted	Bagklap
Del	Bagagerumsklap
Type	Ridser



8C

Sted	Bagklap
Del	Bagagerumsklap
Type	Ridser



8D

Sted	Bagklap
Del	Bagagerumsklap
Type	Ridser

## Evt. Mekaniske fejl

Bemærkninger vedr. mekaniske fejl

## Fabriksudstyr

3. Bremsleuchte

REAR VIEW MIRROR INNER,  
TYPE: Autodim without  
Frame

Emblem 'B4'

Airbag Beifahrerseite	TCM POLESTAR SW: Extra variant	DECAL TRIMLEVEL: Without trim decal
Airbag Beifahrerseite abschaltbar	ADDITIONAL CHARGE CORD: Without Additional Charge Cord	IR REFLECTIVE GLASS WINDSCREEN: Standard Windscreen Glass
Airbag Fahrerseite	LEATHER IP: X-variant	HEATED WINDSCREEN: No Heated Frontscreen
Ambiente-Beleuchtung erweitert	SIDE PANEL, LUGGAGE AREA: Side Panel 2, luggage area	Aquablades, integreret sprinklersystem uden varme
Anti-Blockier-System (ABS)	DOOR PANEL, REAR DOORS: Not applicable variant, no parts allowed	LICENCE PLATE HOLDER REAR: Without licence plate holder
Antriebsart: Frontantrieb	DOOR PANEL, FRONT DOORS: Door panel front door	BUMPER FRONT: Front bumper with holes for number plate holder
Applikationen an den Seitenfenstern Chrom	FRONT SPRINGS-(weight): Extra variant	MUDFLAPS,FRONT: Without front mudflaps
Armaturenbrett in Leder-Optik mit Kontrastnaht	REAR SPRINGS-(weight): Extra variant	AERO BLADES: Without AERO BLADES
Außen-/Innenspiegel mit Abblendautomatik	TOTAL WEIGHT CHECK: Carweight is OK	TRANSPORT STRAPS: Without transport eye
Außenspiegel elektr. anklappbar	FRONT AXLE WEIGHT, only CC: Front Axle Weight	FENDER SEALING: Fender sealing
Außenspiegel elektr. verstell- und heizbar, beide	REAR AXLE WEIGHT, only CC: Rear Axle Weight	WHEEL ARCH: Without wheel arch
Außenspiegel Weitwinkel	FRONT SHOCK ABSORBER: Front shock absorber 2	UNIT SETTINGS: Temp:C, Clock:24, Distance:KM, Fuel:Liter/KM
Außentemperaturanzeige	REAR SHOCK ABSORBER: Rear shock absorber G	Holder til parkeringsbillet
Beinauflage manuell einstellbar, Sitze vorn	REAR SPRING SEAT: Rear Spring Seat 3	NAVI MAP REGIONS: Not applicable variant, no parts allowed
Betätigung Heckklappe/-Deckel automatisch	SPACER LEAF SPRING: Spacer Leaf Spring 5	GLOBAL NAVIGATION SAT SYSTEM: Not applicable variant, no parts allowed
Blinkleuchten LED in Außenspiegel integriert	CABLEHARNASS COCKPIT: Extra variant	TPMS MENU FUNCTIONS in IHU: TPMS, Reset menu
Bordcomputer	CABLEHARNASS ROOF: Extra variant	NIGHT VISION: Without Night Vision
Dachreling Aluminium-Optik	FRONT SEATS, LH: Extra variant	TRAFFIC INFORMATION: Without Traffic Message Channel Premium
Digital-Paket	FRONT SEATS, RH: Extra variant	TRAFFIC INFORMATION, VICS/DRSC: Without VICS
Digitale Instrumentierung 12,3"-Display 2. Generation	FRONT SEAT, LEFT HAND SIDE: LH Seat, extra variant	FOREIGN COMPONENT DETECTION: Without Foreign Component Detection
Einparkhilfe hinten (mit Bremsfunktion)	FRONT SEAT, RIGHT HAND SIDE: RH Seat, Extra variant	CEM: CEM B
Einstiegsleisten mit Aluminiumeinlage	SUNVISOR ILLUMINATED/DECAL: Sunvisor illuminated, kombination variant	MARKET PLATES/LABELS: Decals outside Japan/China
Elektron. Differentialsperre Corner Traction Control (CTC) mit Torque Vectoring	COLOURED PROTECTION CARPETS: Charcoal carpet kit, X-variant	MARKET PLATES/LABELS: Decals outside Russia

Erste Hilfe-Kasten / Verbandkasten	GEARBOX/DRIVELINE: 8- speed automatic, 2WD and 4WD	MARKET PLATES/LABELS: Labels outside CANADA/ MID EU
Fahrassistenz-Paket: Safety Assistance	OUTER REAR VIEW MIRRORS: Outer rear view mirror package	MARKET PLATES/LABELS: Decals outside Latin America/Mexico/Russia
Fahrassistenz-System: Automatische Stabilitätskontrolle ESC	INFOTAINMENT HEAD UNIT: Extra variant	MARKET PLATES/LABELS: Labels outside Canada
Fahrassistenz-System: Bergabfahrkontrolle (HDC)	Comfort forsæder	MARKET PLATES/LABELS: Labels outside Australia
Fahrassistenz-System: Berganfahr-Assistent (HSA)	MATERIAL/PADDING: Combination variant: Material/Padding	MARKET PLATES/LABELS: Labels outside USA
Fahrassistenz-System: Bremsassistent	CAR/GEARBOX/DRIVELINE: V426 auto 2wd	MARKET PLATES/LABELS: Decals outside China
Fahrassistenz-System: Fahrprofilauswahl (Drive Mode)	IHU LEVEL: IHU high	MARKET PLATES/LABELS: Decals outside Japan/China/Korea
Fahrassistenz-System: Fernlichtassistent	CAR/STEERING/SEAT2: Extra Variant	MARKET PLATES/LABELS: Decals outside India
Fahrassistenz-System: Multikollisionsbremse (Multi Collision Brake)	CHARGE CORD BAG: Without ChargeCord BAG	MARKET PLATES/LABELS: Decals outside Brazil
Fahrassistenz-System: Run- off Road Protection	CAR/STEERING/SEAT: Extra Variant	MARKET PLATES/LABELS: Decals outside Arabia
Fensterheber elektrisch vorn + hinten	CHARGE CORD: Without Charge Cord	MARKET PLATES/LABELS: Labels for Europe
Gepäckraum-Abtrennung (Netz)	CABLE HARNESS ENGINE: Extra variant	MARKET PLATES/LABELS: Decals for outside Turkey
Gepäckraumabdeckung / Rollo	INSTR.BOOK FOR DENMARK	MARKET PLATES/LABELS: Decals outside Japan
Geschwindigkeits- Regelanlage (Tempomat)	CABLEHARNESS TUNNEL: Extra variant	MARKET PLATES/LABELS: Labels outside Korea
Getriebe Automatik - Geartronic (8-Stufen)	CABLEHARNESS FRONT SEAT: Not applicable variant, no parts allowed	MARKET PLATES/LABELS: Labels outside USA/CANADA
Heckscheibe heizbar	LEATHER/VINYL CARE KIT: No leather care kit	PLATES/DECALS: Labels for MFK10
Heckspoiler	REAR AXLE CABLE HARNESS: Extra variant	MAIN MARKET: Europe and Overseas markets
Infotainment-System: Android (DAB+) mit High Performance Sound	BUMPER FRONT: Extra variant	USER PACKAGES: User package
Innenausstattung: Dekoreinlagen Driftwood	BUMPER REAR: Extra variant	USER EXCEPTIONS: Only for Volvo Cars Torslanda
Isofix-Aufnahmen für Kindersitz	CAR/STEERING/SEAT3: Extra Variant	USER EXCEPTIONS: Not for Malaysia
Karosserie: 5-türig	ADM. FAMILY FOR TEST CARS: Not applicable variant, no parts allowed	USER EXCEPTIONS: Not for Chengdu
Keyless Drive	ADM. FAMILY FOR TEST CARS: No test series	VBL OBLIGATORISK
Keyless-Start	VEHICLE TYPE: V426 XC60	VIN CODE ADMIN SETTINGS: VIN CODE DEFINITION 5 (EU VERSION. MY23 MC73 only)
Klimaautomatik 2-Zonen	DOORS: 5 door	VIN POS 4 or 7: VIN-code position 4

Knieairbag Fahrerseite	SALES VERSION - ADMINISTRATIVE: Ordinary SV	VIN POS 5 or 8: VIN-code position 5
Komfortsitze vorn Leder / Ledernachbildung	SUV	VEHICLE INSPECTION NUMBER: YV1
Kopf-Airbag-System	AC COMPRESSORS: Mechanical A (140cc)	YEAR DESIGNATION LETTER: Year des N = model year 2022
Kopfstützen hinten elektr. umklappbar	VACUUM LESS BRAKE SYSTEM: Vacuum Less Brake System	MAX FRONT AXLE WEIGHT, C3: 1240 kg
Ladekantenschutz (Aluminium)	OILPAN: Oilpan without bulge	MAX REAR AXLE WEIGHT, C4: 1280 kg
Lendenwirbelstützen vorn, elektr. verstellbar (4-Wege)	THERMOSTAT: Thermostat MEK	GROSS WEIGHT, C1: 2460 kg
Lenkrad mit Multifunktion	STEERING WHEEL POSITION: Left Hand Drive	TRAIN WEIGHT, C2: 4760 kg
Lenksäule (Lenkrad) höhenverstellbar	ENGINE FAMILY 4: MP/HP	MAXIMUM LOAD: Not applicable variant
Lenksäule (Lenkrad) längsverstellbar	ENGINE DENOMINATION: Engine D4	TYRE PRESSURE LLLR: Low speed, light load, rear, 230 kPa
LM-Felgen	TURBO CONFIGURATION: High performance	TYRE PRESSURE LLLF: Low speed, light load, front, 230 kPa
Luftqualitäts-Überwachungssystem (Clean Zone Interior Package CZIP)	ENGINE FAMILY 2: VED4 Engines	TYRE PRESSURE LHLR: Low speed, heavy load, rear, 270 kPa
Make-up-Spiegel beleuchtet	PROPULSION TYPE: Combustion engine only	TYRE PRESSURE LHLLF: Low speed, heavy load, front, 270 kPa
Mild-Hybrid 145 kW (Motor 2,0 Ltr. - 145 kW Diesel)	ENGINE GENERATION VEA: VED4 generation 3	TYRE PRESSURE HLLR: High speed, light load, rear, 230 kPa
Mittelarmlehne hinten mit Getränkehalter	ENGINE GENERATION VEA2: VEA generation 3	TYRE PRESSURE HLLF: High speed, light load, front, 230 kPa
Mittelarmlehne vorn mit Getränkehalter	ENGINE/GENERATION: D420T8 GEN 3	TYRE PRESSURE HHLR: High speed, heavy load, rear, 270 kPa
Modellpflege	ENGINE: VED4 HP 2.0L 197/420	TYRE PRESSURE HHLF: High speed, heavy load, front, 270 kPa
Nebelscheinwerfer LED	Diesel	WVTA-NUMBER: e4*2007/46*1220
Nebelschlussleuchte	ELECTRIC PROPULSION MOTOR: Without Electric Propulsion Motor	TYRE PRESSURE SPARE WHEEL: - The sign '-' to be printed.
Parkbremse elektrisch	ELECTRIC VEHICLE INLET: No Electric Vehicle Inlet	NTA-CODE: No NTA numbers
Radstand 2865 mm	HIGH VOLTAGE BATTERY: Without High Voltage Battery	OCCUPANTS: No occupants
Reifen-Reparaturset	POWERPULSE ENGINE: Without PowerPulse	TYRE DIMENSION FOR LABELS: NONE
Reifendruck-Kontrollsystem	ENHANCED REGEN/48V KERS: With 48V KERS	COOLER KIT TYPE (F): Cooler kit type 1
Rußpartikelfilter	STOP/START: Stop/Start	Driver Assistance

Rücksitz geteilt	Battery H7 AGM 80Ah 800 CCA	INSULATED AIR DUCT B-PILLAR: No insulated air duct in B-pillar
Rücksitzlehnen klappbar	HYBRID BATTERY: Battery 2	Oncoming Lane Mitigation, vores kollisionsafværgelsesteknologi
Schadstoffarm nach Abgasnorm Euro 6d	ACTIVE GRILLSHUTTER: Active Grillshutter	PINE GREY / Metallic
Schalt-/Wählhebelgriff Kristallglas	SOC-LEVEL: Standard SOC-level	Painted bumper
Scheibenwischer mit Regensensor	SUPPORT BATTERY: Support Battery 5, 48V	Painted bumper
Scheinwerfer LED mit adaptiver Lichtverteilung (Intelligent Light System)	SHIFT BY WIRE: With Shift By Wire 2	Indstigningsliste, metal 'Volvo'
Schleudertraumaschutzsystem (WHIPS)	Pedaler i standardudførelse	Beskyttelsesliste ved bagagerum, metal
Seitenairbag vorn	GEARBOX,TYPE: Automatic gearbox	Beskyttelsesliste ved bagagerum, metal
Sensor Scheibenbeschlagenerkennung	GEARSHIFT INDICATOR: Gearshift indicator	TRAILER MODULE: TRailer Module 13-pos socket, Semi-el retractable towbar
Servolenkung geschwindigkeitsabhängig	GEAR SHIFT PADDLES: Without Gear Shift Paddles	Elektrisk indfældelige sidespejle
Sicherheitsgurte vorn höhenverstellbar	ENGINE COOLING FAN PERFORMANCE: Fan medium performance	Aut.nedblændende bak- og sidespejle
Sitz vorn links elektr. verstellbar (mit Memory)	RADIATOR, TOW KIT: Without radiator towing kit	Karosserifarvede sidespejlskåber
Sitze vorn höhenverstellbar	ROOF ABSORBER: Without Roof Absorber	Integrerede roof rails, Bright Silver
Start/Stop-Anlage	ADAPTIVE LOAD LIMITER FRONT: Without Adaptive Load Limiter Front	LED forlygter Mid Level med Active High Beam (op/ned)
Steckdose (12V-Anschluß) im Koffer-/Laderaum	PARKING CLIMATE LEVEL, OPTION: No parking climate option	Indstigningslys
Stoßfänger vorn mit Chrom-Applikationen	PTC HEATER (SUPL. AIR HEATER): Without Positive Thermal Coefficient	Road Sign Information
Tagfahrlicht LED	REFRIGERANT: 1234YF	High positioned rear brake lights
Taschenhaken im Gepäckraum	VAC, REAR: Without rear VAC	Forlygtespulere, højtryk
USB-Anschlüsse (2) im Fond	REFRIGERANT AGENT QUANTITY: Refrigerating agent 650g	Regnsensor
Volvo ON CALL	BYPASS VALVE HVAC: With bypass valve	Fully colour adapted sills and bumpers with Bright side deco
Warnanlage für Sicherheitsgurte vorn und hinten	SEAT TRACK SENSORS: Without Seat Track Sensors	Opvarmet kølergrillembem
Wegfahrsperre	LAP BELT PRETENSIONER: Without Lap Belt Pretensioner	Siderudelister i Bright Decor
Winter-Paket	SRS CALIBRATION: SRS Calibration 1	Inscription bright TL element exterior rear
Zentralverriegelung mit Fernbedienung	ERR SEAT BELTS: Without Electrical Reversible Retractors	Standard mesh front

Alarmanlage mit Fernbedienung	PRE CLEANING: Without Pre-Cleaning	Sideruder i hærdet glas
Anhængerkupplung semi-elektrisch	OCCUPANT WEIGHT SENSOR (OWS): Without Occupant Sensor	DAB+ radio
Fahrerassistenz-Paket: Driver Assistance	ROOF HATCH: No roof hatch/panorama roof	High Performance lydanlæg
Freisprechanlage Bluetooth inkl. Audio-Streaming	PINCH PROTECTION LEVEL: Standard pinch protection	Bluetooth® til håndfri telefoni og lyd-streaming
Ionisator zur Luftreinigung (erweiterte Reinigung der Innenraumluft)	PEDESTRIAN PROTECTION POP-UP: Without Pedestrian Protection pop-up bonnets	Volvo On Call/ iCUP
Kraftstofftank: 71 Ltr.	COLOUR MATCHING, INTERIOR: Colour matching interior	2 USB Typ-C connections
Metallic-Lackierung	COLOUR MATCHING, EXTERIOR: Colour matching, exterior	Google Services
Model: XC60 II Inscription SUV 5 door	COLOUR MATCHING, EXTERIOR: Colour matching, exterior	CARPLAY
WS-IC: 0	FOIL, EXTERIOR: No foil	CARPLAY
DANISH FOR INSTRUMENT/RADIO	FUEL ECONOMY LABEL: NO FUEL ECONOMY LABEL	12" førerdisplay
COMMON 42: V526/V426	IF INSCRIPTION: LOGO HEAD REST: No Inscription logo on headrest upholstery	Intelligent Driver Information System (IDIS)
COMMON MATERIAL: Common material - all type 42 cars	SEAT COLOUR INTERIOR: Charcoal upholstery colour interior	High Performance lydanlæg
INTERIOR CODE: Charcoal interior/LeaA/Charcoal seat/Comfort	Loftsbeklædning i Blond (lysgrå)	CENTER STACK DISPLAY: 9 inch 3.0 // CSD 3.0
EXTERIOR CODE: Pine Grey	COLOURED PROTECTION CARPETS: Without black carpet kit	Speech function
EXTERIOR PAINT,TYPE: Metallic	COLOURS,INT/EXT: Pine Grey	Parkeringsensorer, for og bag
SECONDARY EXTERIOR CODE: No secondary exterior code	BASE COLOUR INTERIOR: Charcoal base colour interior	Overvågning af dæktryk (iTPMS)
STOLEN VEHICLE/THEFT NOTIFY: With Stolen Vehicle Tracking / With Theft Notification	TRAFFIC SIGN INFORMATION: SWEDEN, TSI without SLA	Skræddersyet instrumentbræt
ASSISTANCE SERVICES: With Assistance Services (VOC + ECALL)	EMERGENCY LANE KEEPING AID: Emergency Lane Keeping Aid 3	Driftwood dekor
DECO TRIM ILLUMINATION: Without Deco Trim Illumination	AUTONOMOUS VEHICLE: No Autonomous Vehicle	Knæairbag, førerside
ALCOLOCK: Without Alcolock	AUTONOMOUS DRIVE KIT: No Autonomous Drive Kit	Hastighedsbegrænser
RUNNINGBOARD ACCESSORIES: Without Runningboard	GASOLINE PARTICLE FILTER: Without GPF	SHIELDED WIRE, IF POT: Shielded wire

ADM. FAMILY AFTERMARKET: Service solution	Diesel fuel pump	Airbag i fører- og passagerside
ADM. FAMILY AFTERMARKET: Service solution	MFI FUEL FILLER: MisFueling Inhibitor	Airbag i fører- og passagerside
ADM. FAMILY AFTERMARKET: Standard BCM2 SW	EMISSION EVAPORATOR SYSTEM: Without evap system	Airbaggardin (IC) Inflatable curtains
ADM. FAMILY AFTERMARKET: ESM Standard	DIAGNOSIS SYSTEM: EOBD	Airbaggardin (IC) Inflatable curtains
ADM. FAMILY AFTERMARKET: Service solution	VEA gen 3, Euro 6d, Kers	Sidekollisionsbeskyttelse
ADM. FAMILY AFTERMARKET: Original fuel tank	CATALYST TYPE: Catalyst Diesel 6d	Afbryderkontakt til passagerairbag, for
ADM. FAMILY AFTERMARKET: Service solution	VERSION DIVIDER FOR VIN: Version Divider V	Midterarm læn bag
ADM. FAMILY AFTERMARKET: SOC 100	Inscription kølergrill i High Gloss Black med forkromet rammet	Bagagerumsdækken, manuelt
ADM. FAMILY AFTERMARKET: Service solution	SURFACE TREATMENT TYPE GRILL: Standard surface treatment grill	Lastbeskyttelsesnet med pose til opbevaring
ADM. FAMILY AFTERMARKET: Service solution	HEADLIGHTS,SYMMETRY: R asymmetric	Elektronisk klimaanlæg, 2 zoner
ADM. FAMILY AFTERMARKET: Service solution	FOGLIGHT/FUNCTION IN SPOILER: Without Front Foglight Restrictions	Klimatisering efter motorstandsning
ADM. FAMILY AFTERMARKET: Service solution	HEAD LIGHT LEVELLING: Without head light levelling	SAFETY BELT: Safety Belt, type B
ADM. FAMILY AFTERMARKET: Service solution	HORN: Horn, std.	El-opvarmede forsæder
ADM. FAMILY AFTERMARKET: HCA OLD	TRANSPORT COVER: Without protection cover	CHARCOAL/LEAA/CHARCOAL
ADM. FAMILY AFTERMARKET: Service solution	THEFT PROTECTION COVER: With theft protection cover	El-justerbar førersæde med hukommelse
ADM. FAMILY AFTERMARKET: Service solution	THEFT PROTECTION CEM: With theft protection CEM	Mechanical passenger seat with Tilt function (from 18w46) and Power height adjustment
ADM. FAMILY AFTERMARKET: Service solution	THEFT PROTECTION COVER HOOD: Theft protection cover front (hood)	Elektrisk pudeforlænger, fører
ADM. FAMILY AFTERMARKET: Service solution	REAR FOGLIGHT TOWFUNCTION: Foglights shut off when trailer is connected, only trailers foglights are running	El-justerbar lændestøtte, 4 vejs
ADM. FAMILY AFTERMARKET: Service solution	FOGLIGHTS IN SPOILER: Without foglight	Manuel nedfældbart ryglæn ved bagsæder

ADM. FAMILY AFTERMARKET: Service solution	SIM CARD FOR CONNECTIVITY: Only through Personal SIM	Manuel nedfældbart ryglæn ved bagsæder
ADM. FAMILY AFTERMARKET: Service solution	MEDIAPLAYER: Without media player	Elektrisk hævede og sænkede nakkestøtter på bagsæderne
ADM. FAMILY AFTERMARKET: Service solution	DAB RADIO RECEIVER: With DAB	Kontakt til centrallås med diode i fordøre
ADM. FAMILY AFTERMARKET: Service solution	TELEPHONE NETWORK: Telephone system GSM	Two step unlocking OFF
ADM. FAMILY AFTERMARKET: Service solution	MEMORY, PASSENGER SEAT: Without memory, passenger seat	Elbetjent bagklap
ADM. FAMILY AFTERMARKET: Service solution	SPEED WARNING: Without speed warning	Nøglefri adgang og håndfri åbning af bagklap
ADM. FAMILY AFTERMARKET: Service solution	Speed limit 180 km/h	Fjernnøgle
ADM. FAMILY AFTERMARKET: Service solution	CURVE SPEED ASSIST: Without CSA, without CSW	Belt minder all seats, EU logic
ADM. FAMILY AFTERMARKET: Service solution	HEAD UP DISPLAY: Without Head Up Display	Whiplash protection (WHIPS) på forsæderne
ADM. FAMILY AFTERMARKET: Service solution	REGION IF DVD: DVD region 2	Sikkerhedsseler
ADM. FAMILY AFTERMARKET: Service solution	REAR SEAT ENTERTAINMENT: Without Rear Seat Entertainment	Interiørbelysning High Level
ADM. FAMILY AFTERMARKET: Service solution	TV TUNER: Without TV	Makeupspejle med lys
RESTRICTED KEY FUNCTION: Without restricted key	TV TUNER TYPE: Without TV tuner	Tyverialarm
WORKSHOP WIFI: With workshop wifi	VIDEO ALLOWED: Speed dependent	Fugtighedssensor
SERVICE SOLUTION: Service solution	SUBWOOFER: Without subwoofer	Fem sæder
ENGINE OPTIMIZATION AFTERMARKE: Standard calibration engine	With Telematic CA Module EU	Eludtag, bagagerum
CONNECTIVITY: With Connectivity	Blocked lock mode (BLL)	Måtter i tekstil
CSB - IF CONNECTIVITY: Connected Service Booking	CHILD LOCK.REAR DOORS: Without electrical child lock, rear side doors	ISOfix beslag i bagsædet, yderpladser
EXT. DECO ILLUM. PREP: Without Ext. Deco. Illum. Preparation	FOOT MOVEMENT DETECTION MODULE: Foot movement detection module Gen2	Krystal-gearstang fra Orrefors®
HEATER TYPE: Without heater	PASSIVE ARMING: Without passive arming	First aid kit, DIN 13164
TOWBAR: No towbar	RETRIGG ENABLING - IF ALARM: Retrigger 10 cycles	Warning Triangle

TRAILER STABILITY ASSIST: TRaILER STaBility Assist	Inclination sensor for Alarm	Parkeringskamera bag
ACCESSORY GATEWAY UNIT: Without AGU	REAR WIEW MIRROR,LH SIDE: LH side rear wiew mirror, wide angle	Trådløs telefonopladning (Qi)
EXTENDED ACCESSORY MODULE: Without EAM	REAR WIEW MIRROR, RH SIDE: RH side mirror, wide angle, without text	Brake discs 18' FN+
AUXILIARY LIGHTS, AFTER MARKET: Without auxiliary lights	AUDIBLE LOCKING FEEDBACK: Audible locking feedback disabled	Rear brake 17 inch
LEVELLING SENSOR CONFIGURATION: VDDM, Front Right, Rear Right	POWER OPERATED SIDE DOORS: Without Power Operated Side Doors	Undervogn
FLARE BRACKET: Without Flare Bracket	VISIBLE LOCKING/UNLOCKING: Visible locking and unlocking feedback, default ON	Slippery Road Alert and Hazard Light Alert
ALCO LOCK PREP: Without alco lock prep	PANIC FUNCTION: Panic function with light & sound	Lane Keeping Aid
DEM/TCM SW: Without PS DEM/TCM SW	CIG. LIGHTER/ASHTRAYS: Without Cigarette lighter/ashtray	Oncoming Lane Mitigation, vores kollisionsafværgesteknologi
POLESTAR PERFORMANCE SW: No Polestar Performance Software	Private locking	Låsebolts sæt
GROUND STRAP: Without ground strap	DARKENED REAR WINDOWS: Without Dark rear glasses	EXTERIOR LIGHT LOGIC: DDRL not together with position light
SKIDPLATE REAR: Without skidplate rear (accessory)	OPEN, REAR SIDE DOOR: 1 pull to open Rear side door, from locked	Dækreparations kit
REMOTE ENGINE START PRECOND: Remote Engine Start Precond from smartphone app	AUTOMATIC LOCKING BY SPEED: Automatic Locking by speed enabled, default ON	Ratfjernbetjening til audio og telefon
REMOTE BATTERY MANAGEMENT: Without Remote Battery Management from smartphone app	Interior motion sensor for Alarm	3-eget læderrat
REMOTE MONITORING SYSTEM: RMS deactivated	BLIND SPOT INFORMATION SYSTEM: Without Blind spot Information System	STEERING COLUMN: Steering column type B manual adj.
VIN NUMBER COVER: Without VIN-cover	FREQUENCY - REMOTE CONTROLS: Frequency 434 MHZ	STEERING COLUMN: Steering column type B manual adj.
LAMBDA SENSORS: 2 Lambda probes	EXTRA VARIANT: EXTRA VARIANT	Programmerbar servostyring
Dogleg	ACTIVE NOISE CONTROL: Without Active Noise Control	Hill Descent Control
INSULATION, MISC.: No Extra Interior Absorbers	EXTERIOR SOUND MODULE: Without Exterior Sound Module	DRIVE MODE: With drive mode glass button switch CSD
SCREEN THEMES/SKINS: Screen Skins 'Standard 1'	No Air Quality System, Multifilter	TRANSMISSION: 2 wheel drive

EPP FOAM: Without EPP Foam	LOCK CYLINDER GLOVEBOX: No lock cylinder glovebox	Bremsesystem
Number Plate ADAPTer 1 'EU'	APMS: No Air borne Particulate Matter Sensor	ALTERNATOR: Alternator/Starter motor
FIRE EXTINGUISHER: Without fire extinguisher	AVAS, ESM CALIBRATION: Without ESM calibration.	8-trins Geartronic™ automatic
INSULATION CARPETS: High spec NVH-carpets	SPEECH LANGUAGE, NOT USED: English	8-AUT 2WD
ADAPTER CABLE HARNESS: Without adapter cable harness	IONIC INTERNAL AIR CLEANER: Without ionic internal air cleaner	With UREA
HVAC FLOOR SENSORS: Without floor sensors in HVAC	Digital instruktionsvejledning	Fuel tank 71 litres
PRODUCT LABEL: Country of Origin	FREQUENCY BAND & STEP,RADIO: Frequency band and step for EU	With electric fuel lid opening
END STOP QUANTITY, DRIVER SEAT: Endstop driver seat, 1psc	Danish	Start/Stop-teknologi
END STOP QUANTITY, PASSENGER: Endstop passager seat, 1psc	LANGUAGE REGION: Language Region for Europe	VED4 HP 2.0L 197/420
END STOP LENGTH: Length 2	Owners manual Danish, with warranty booklet,	Fem sæder
REAR SUBFRAME FASTENING: Without Pyrotechnical Nuts for Rear Subframe fastening	INSTRUMENT CLUSTER CALIBR.: Parameter file for EUROPE	12V stik bagagerum
PYRO-TECHNICAL STEERING COLUMN: Without Pyro-Technical Steering Column	Service distance 30000 km / ~18640 miles	Forlygtespulere
Alarm Logic Base	SERVICE TIME: Service time, 12 months.	Trådløs opladning af mobiltilf.
ADMIN. OPTION TYRES: Not applicable variant, no pars allowed	SERVICE ENGINE TIME: Service Engine Time, 650 hour	DAB radio
FMVSS-DECAL/PLATE: Without FMVSS label	BOTTLEHOLDER IN CARGO AREA: Not applicable variant	ABS bremseser
CHILDSEAT DECAL: Without child seat decal	NETPOCKET IN CARGO AREA: No netpocket in cargo area	Aut. nedblænd bak/sidespejle
SUNVISOR DECAL: Sunvisor decal	LOADHOLDER: Without loadholder	Volvo On Call
WINDSCREEN FOR SPECV: Standard Windscreen, follows base car	HEADRESTS FRONT: 2 way headsrests Front, manual	Digital instrumentering 12,3"
SEAT BELT FOR SPECV: Standard Belt, follows base car	CHILD SEAT ATTCHM, LABEL REAR: Isofix label, B	Capless filling
COMMON MATERIAL SEAT NUMBER: 5 and 7 seats	Child seat attachments in front passenger floor	Automatisk bremsning efter kollision
COMMON MATERIAL SEAT NUMBER: 4, 5, 6 and 7 seats	CHILD SEATS, REAR SEATS, 2row: No child seat	!Letmetalfølge 19"
REAR SEAT REMOTE FUNCTIONALITY: No rear seat remote functionality	PROTECTION CARPETS, row 3: Without carpet kit, row 3	El-styret bagklap

SW MINOR VERSION: SW Minor 02	Standard material in headlining	El-indf.bare spejle m/lys
SW MAJOR VERSION: SW Major 04	Læderindtræk	Dæktrykskontrol, TPMS
SW PATCH VERSION: SW Patch 13	MASSAGE FRONT SEAT: Without Massage, front seat	3-eget læderrat med unideco
ADM POLICE/TAXI/SPECV: Administrative designation for not police cars	FRONT SEAT VENTILATION: Without ventilated seat	Fugtigheds sensor
ADM FOR S-CAR (UNIQUE PNO): Adm. variant for standard car	REAR SEAT VENTILATION: Without rear seat ventilation	Førstehjælps kit
POLICE KIT A,B,CUSTOMS & FMV: Not for Police	HEATED REAR SEAT: Without heated rear seat	Færdselstavlegenkendelse
CUSTOMER OPTIMIZATION: Without Customer optimization	POWER FOLD & RISE 3:d ROW: No fold & rise 3:d row rear seat	Drive mode setting
PARTS FOR SPECIAL PRODUCTS: Parts excluded for Special Vehicle	POWER ADJUSTABLE SIDE SUPPORT: Without power adjustable side support	Manuelt justerbare forsæder m. el-styret højde
ADMINISTRATIVE FAMILY: Not applicable variant, no parts allowed	END STOP MATERIAL: End stop in plastic	Hill start assist
ADMINISTRATIVE FAMILY: Not applicable variant, no parts allowed	COMFORT MODULE, SIDE PANEL: No comfort module, sidepanel luggage area	Jalousilåg i miderkonsollen
ADMINISTRATIVE FAMILY: Not applicable variant, no parts allowed	UPHOLSTERY TYPE: Production upholstery	Driver Alert Control
ADMINISTRATIVE FAMILY: Not applicable variant, no parts allowed	TOLL ROAD TRANSPONDER: No Toll Road Transponder	Måtter
ADMINISTRATIVE FAMILY: Not applicable variant, no parts allowed	OVERHEAD CONSOLE ILLUMINATION: Not applicable variant, no parts allowed	Indtræk : Comfort stole Moritz læder
ADMINISTRATIVE FAMILY: Not applicable variant, no parts allowed	COMPASS: Without compass	LED forlygter med AHB (op/ned)
ADMINISTRATIVE FAMILY: Not applicable variant, no parts allowed	POWER OUTLET TUNNEL: No 120/230 volt outlet in rear/lower tunnel console	Home safe LED-belysning
ADMINISTRATIVE FAMILY: Not applicable variant, no parts allowed	LOADING FLOOR, REAR: Rear loading floor 1	Parkeringshjælp for & bag
ADMINISTRATIVE FAMILY: Not applicable variant, no parts allowed	SUN CURTAIN REAR WINDOW: Without sun curtain, rear window	Knæ-airbag ved førerpladsen
ADMINISTRATIVE FAMILY: Not applicable variant, no parts allowed	SUN CURTAIN SIDE WINDOW REAR: Without sunblind, side window	Make up spejle m/lys
ADMINISTRATIVE FAMILY: Not applicable variant, no parts allowed	HOMELINK: Without homelink	Interiør belysning "High level"
ADMINISTRATIVE FAMILY: Not applicable variant, no parts allowed	HOMELINK TYPE: Without homelink	Regnsensor

ADMINISTRATIVE FAMILY: Not applicable variant, no parts allowed	RECESS: Not applicable variant, no parts allowed	Låsbart handskerum
ADMINISTRATIVE FAMILY: Not applicable variant, no parts allowed	19" 5-Multi eger Black Diamond Cut	SIPS airbags
ADMINISTRATIVE FAMILY: Not applicable variant, no parts allowed	TYRE, INCH: 19' Tyre	Kopholder for
ADMINISTRATIVE FAMILY: Not applicable variant, no parts allowed	RIM, INCH: 19' Rim	Run off road mitigation
ADMINISTRATIVE FAMILY: Not applicable variant, no parts allowed	Continental V, low rolling resistance	Oncoming Lane Mitigation
ADMINISTRATIVE FAMILY: Not applicable variant, no parts allowed	235/55R19	Armlæn for
ADMINISTRATIVE FAMILY: Not applicable variant, no parts allowed	TYRE CIRCUMFERENCE: Rolling circumference 2275mm	Nøglefri adgang med "Tag-ID"
ADMINISTRATIVE FAMILY: Not applicable variant, no parts allowed	ACTIVE SUSPENSION: Without Continious Controlled Chassi	Airbag afbryd nøgleløsn.
ADMINISTRATIVE FAMILY: Not applicable variant, no parts allowed	BRAKE PADS: Standard pad	Ratfjernbetjening
ADMINISTRATIVE FAMILY: Not applicable variant, no parts allowed	DEFAULT RIDE HEIGHT: Default ride height without air suspension	Dæk reparations kit
ADMINISTRATIVE FAMILY: Not applicable variant, no parts allowed	POST IMPACT BRAKING: Post Impact Braking	Parkeringskamera bag
ADMINISTRATIVE FAMILY: Not applicable variant, no parts allowed	AIR SUSPENSION: Without air suspension	IDIS - Intelligent Driver Information
ADMINISTRATIVE FAMILY: Not applicable variant, no parts allowed	CHASSIS TYPE CCD: Without CCD	El-sidespejle med varme
ADMINISTRATIVE FAMILY: Not applicable variant, no parts allowed	COLLISION MITIG. & WARN. REAR: Without Rear Collision Warning and Mitigation	El - Parkeringsbremse
ADMINISTRATIVE FAMILY: Not applicable variant, no parts allowed	RADARTYPE: With ARGUS	Sensus Connect High Performance
ADMINISTRATIVE FAMILY: Not applicable variant, no parts allowed	JACK: Without Jack	Isofix bag
ADMINISTRATIVE FAMILY: Not applicable variant, no parts allowed	EBL, Flashing Brake Light og Hazard Warning	Fjernb. centrallås
ADMINISTRATIVE FAMILY: Not applicable variant, no parts allowed	HEATED STEERING WHEEL: Without heated steering wheel	El-ruder for & bag
PHONE AS KEY: No phonekey	Escalated Emergency Stop: EES Level 1	City Safety
HATCH/RAILS: Extra variant Without HATCH/RAILS	VIBR. DAMPER STEERING WHEEL: Without vibration damper	Låsbare hjulbolte

SPECIAL VEHICLE WEIGHT VERSION: Standard vehicle	UNDER FLOOR AERO KIT: Without Under Floor Aero KIT	Klimaanlæg ECC
SPECIAL VEHICLES CAR CONFIG: Standard Vehicle, no SPECV CC	With SNOW DEFlector	Førerassistent pakke MY22
SPECIAL VEHICLES SPEED LIMIT: Standard Speed Limitation	STEER. COLUMN LOCK/KEY WARNING: With steering column lock, Key warning disabled	Hill Descent Control (kun AWD)
ADM. FAMILY FOR TPMS: With ITPMS-(indirect)function	EMBLEM, SALES VERSION LEVEL: Without emblem sales version tailgate	Google Maps (navigation, life time updates)
Administrative for Inscription vehicle	EMBLEM, MANUFACTURER: Without Emblem Manufacturer	Google Assistance ("Hey Google..." m. dansk stemmestyring)
POLESTAR ENGINEERED: Not Polestar Engineered	XC60 emblem	Google Play Store (med udvalgte apps)
Beskyttelseshættesæt, Matt Tech Grey	Without extra emblem tailgate	Metallak