

# TILSTANDSRAPPORT

## Stamdata

Registreringsnummer	DG62485	Stelnummer	LRWYGCEK4NC256123		
Mærke	TESLA	Model	Model Y	Version	Long Range Dual Motor
Karosseritype	MPV	Farve	Grå	Reg. dato	18-03-2022
Drivkraft	El	Drivlinje	4 wheels drive	Geartype	Automatisk
KM. stand	155455	Antal nøgler	2	Kontraktnummer	5140492
Afliveringsdato	26-03-2026				

## Udvendige billeder



## Dæk og mønster

Position	Mærke	Størrelse	Slidbane	Dæktype
Venstre, For	Goodyear	255/45-19	08 mm	Vinter
Venstre, Bag	Goodyear	255/45-19	08 mm	Vinter
Højre, Bag	Goodyear	255/45-19	08 mm	Vinter
Højre, For	Goodyear	255/45-19	08 mm	Vinter

## Ekstra hjul

Ekstrahjul tilstede

Nej

Position	Mærke	Dæktype
Ekstrahjul		

## Reservedæk og rep. kit

Rep. kit tilstede

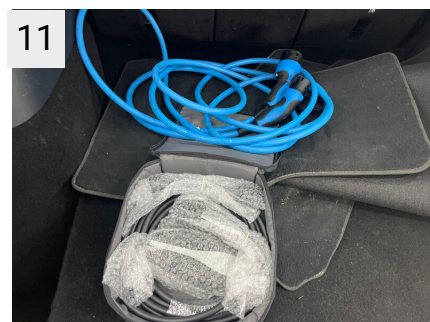
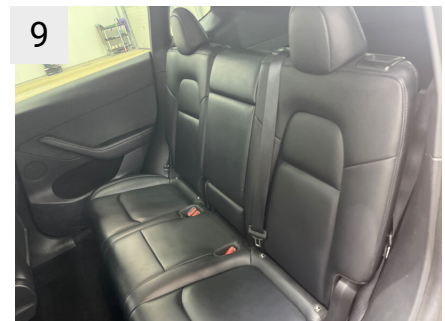
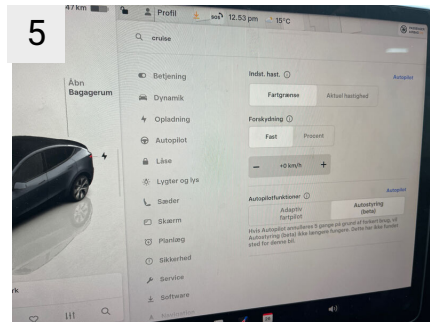
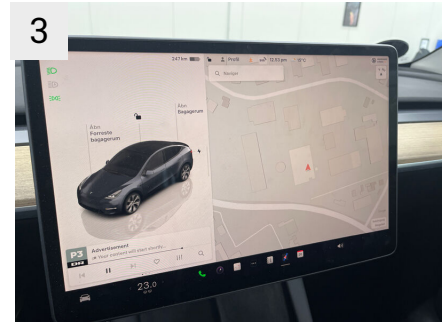
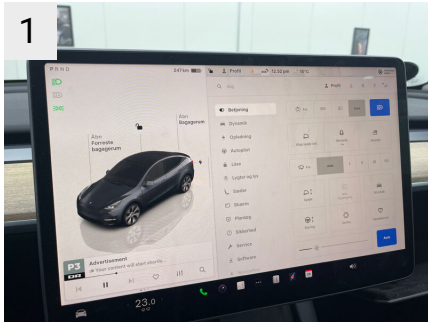
Ikke relevant

Reservehjul tilstede

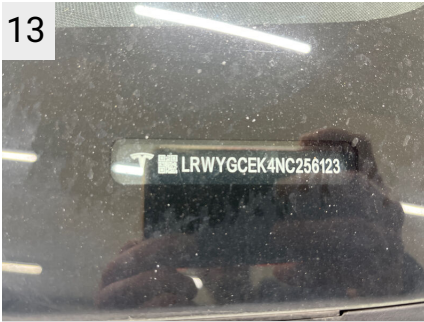
Ikke relevant

Position	Mærke	Størrelse	Slidbane
Reservehjul		/-	

## Præsentationsbilleder



13




## Mangler / Tilstand

Ref	Sted	Del	Type	Handling
-----	------	-----	------	----------

## Skader


Ref	Sted	Del	Type	Handling
#1	Fælge	Fælg Venstre, For	Ridset	K4
#2	Fælge	Fælg Venstre, Bag	Ridset	K4
#3	Fælge	Fælg Højre, Bag	Ridset	K4
#4	Fælge	Fælg Højre, For	Ridset	K4
#5	Forrude	Rude	Risiko for følgeskade	K5
#6	Motorhjelm	Hjelm	Stenslag	K3
#7	Front	Forkofanger	Stenslag	K3
#8	V. forskærm	Skærm	Stenslag	K3
#9	V. fordør	Dør	Stenslag	K3
#10	V. panel	Indstigning Venstre For	Rids	K3
#11	V. panel	Indstigning Venstre Bag	Rids	K3
#12	V. bagdør	Dør	Stenslag	K3
#13	Bagklap	Bagklap	Bule(r)	K3
#14	H. bagdør	Dør	Stenslag flere	K4
#15	H. fordør	Dør	Stenslag	K3
#16	H. forskærm	Skærm	Stenslag	K3
#17	Interiør	Rat	Skadet	K5

**1**




Sted	Fælge
Del	Fælg Venstre, For
Type	Ridset

**1A**




Sted	Fælge
Del	Fælg Venstre, For
Type	Ridset

**1B**




Sted	Fælge
Del	Fælg Venstre, For
Type	Ridset

**1C**




Sted	Fælge
Del	Fælg Venstre, For
Type	Ridset

**2**




Sted	Fælge
Del	Fælg Venstre, Bag
Type	Ridset

**2A**




Sted	Fælge
Del	Fælg Venstre, Bag
Type	Ridset

**3**




Sted	Fælge
Del	Fælg Højre, Bag
Type	Ridset

**3A**



Sted	Fælge
Del	Fælg Højre, Bag
Type	Ridset

**4**



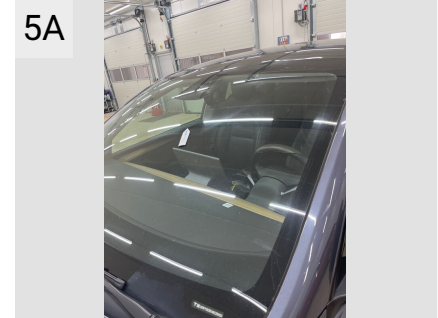
Sted	Fælge
Del	Fælg Højre, For
Type	Ridset



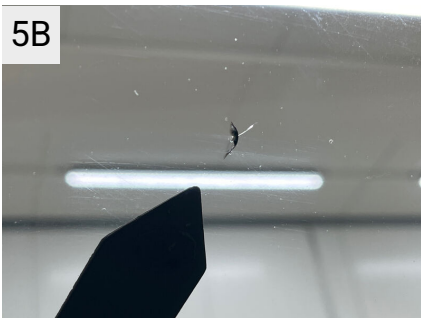
Sted	Fælg
Del	Fælg Højre, For
Type	Ridset



Sted	Forrude
Del	Rude
Type	Risiko for følgeskade



Sted	Forrude
Del	Rude
Type	Risiko for følgeskade



Sted	Forrude
Del	Rude
Type	Risiko for følgeskade



Sted	Motorhjeml
Del	Hjelm
Type	Stenslag



Sted	Motorhjeml
Del	Hjelm
Type	Stenslag



Sted	Motorhjeml
Del	Hjelm
Type	Stenslag



Sted	Motorhjeml
Del	Hjelm
Type	Stenslag



Sted	Front
Del	Forkofanger
Type	Stenslag



7A  
Sted Front  
Del Forkofanger  
Type Stenslag



7B  
Sted Front  
Del Forkofanger  
Type Stenslag



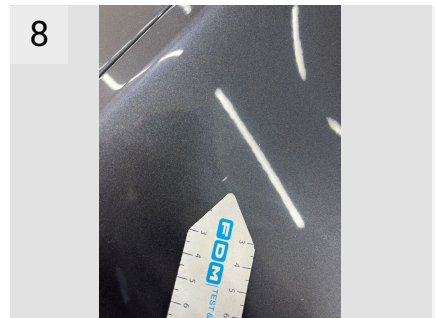
7C  
Sted Front  
Del Forkofanger  
Type Stenslag



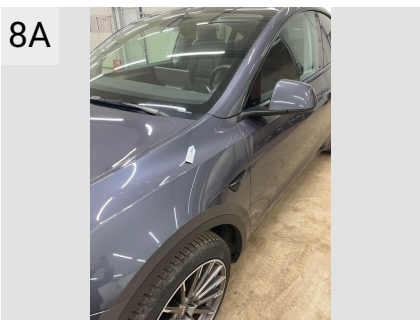
7D  
Sted Front  
Del Forkofanger  
Type Stenslag



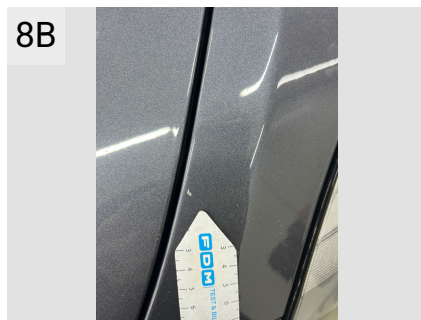
7E  
Sted Front  
Del Forkofanger  
Type Stenslag



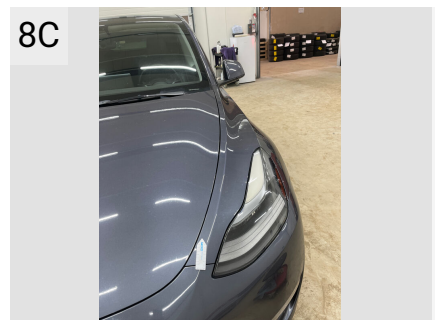
8  
Sted V. forskærm  
Del Skærm  
Type Stenslag



8A  
Sted V. forskærm  
Del Skærm  
Type Stenslag



8B  
Sted V. forskærm  
Del Skærm  
Type Stenslag

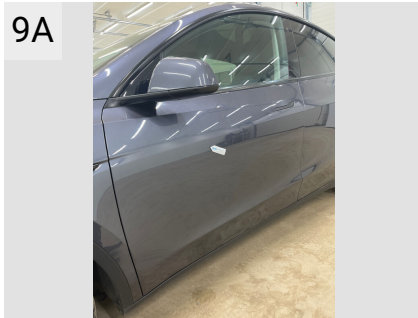


8C  
Sted V. forskærm  
Del Skærm  
Type Stenslag



9

Sted V. fordør  
Del Dør  
Type Stenslag



9A

Sted V. fordør  
Del Dør  
Type Stenslag



10

Sted V. panel  
Del Indstigning Venstre For  
Type Rids



10A

Sted V. panel  
Del Indstigning Venstre For  
Type Rids



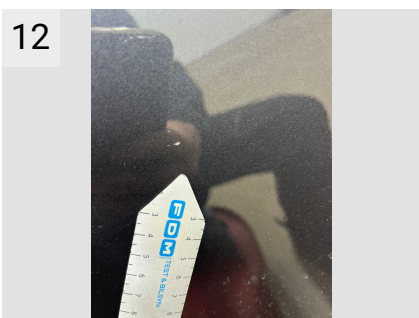
11

Sted V. panel  
Del Indstigning Venstre Bag  
Type Rids



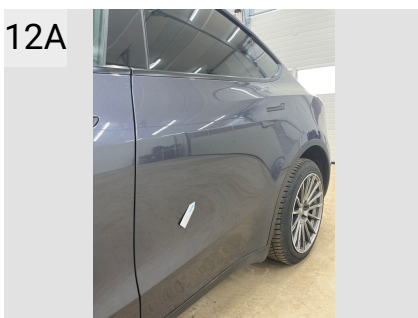
11A

Sted V. panel  
Del Indstigning Venstre Bag  
Type Rids



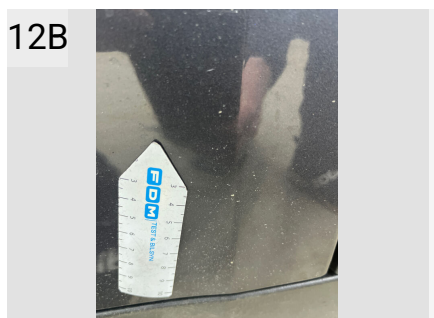
12

Sted V. bagdør  
Del Dør  
Type Stenslag



12A

Sted V. bagdør  
Del Dør  
Type Stenslag

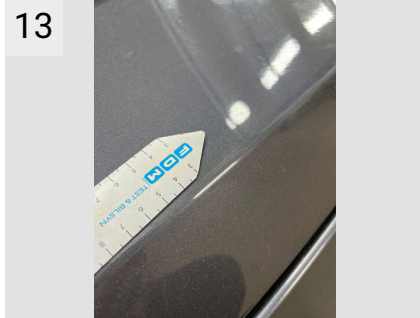


12B

Sted V. bagdør  
Del Dør  
Type Stenslag



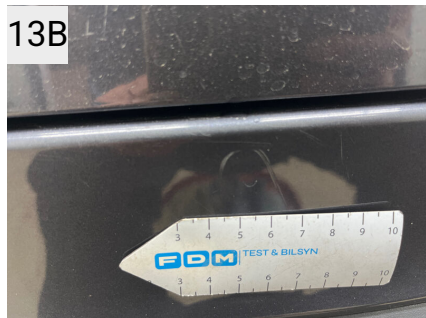
12C  
Sted V. bagdør  
Del Dør  
Type Stenslag



13  
Sted Bagklap  
Del Bagklap  
Type Bule(r)



13A  
Sted Bagklap  
Del Bagklap  
Type Bule(r)



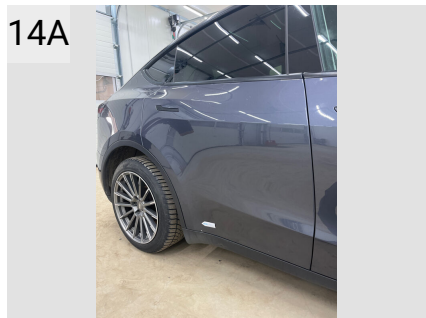
13B  
Sted Bagklap  
Del Bagklap  
Type Bule(r)



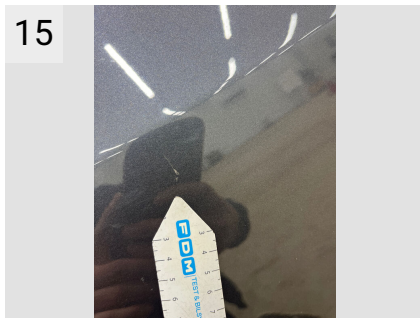
13C  
Sted Bagklap  
Del Bagklap  
Type Bule(r)



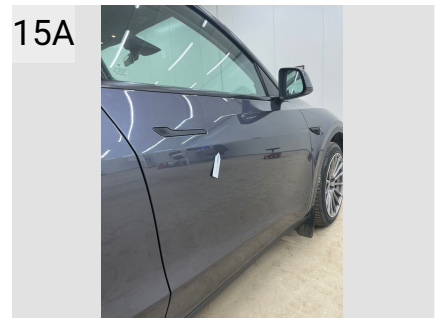
14  
Sted H. bagdør  
Del Dør  
Type Stenslag flere



14A  
Sted H. bagdør  
Del Dør  
Type Stenslag flere



15  
Sted H. fordør  
Del Dør  
Type Stenslag

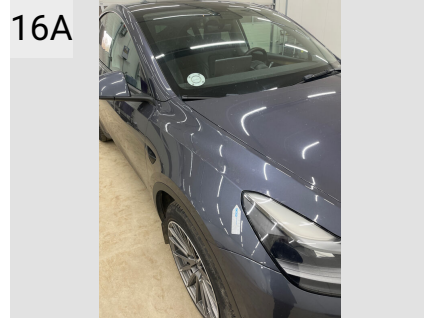


15A  
Sted H. fordør  
Del Dør  
Type Stenslag



16

Sted	H. forskærm
Del	Skærm
Type	Stenslag



16A

Sted	H. forskærm
Del	Skærm
Type	Stenslag



17

Sted	Interiør
Del	Rat
Type	Skadet



17A

Sted	Interiør
Del	Rat
Type	Skadet



17B

Sted	Interiør
Del	Rat
Type	Skadet

## Evt. Mekaniske fejl

Bemærkninger vedr. mekaniske fejl

## Fabriksudstyr

Midnight Silver Metallic

# INDEPENDENT BATTERY CERTIFICATE



CERTIFICATE NUMBER: 1CCEF54B-5A50-4BDD-BF23-E7D5FEE49AC7

## VEHICLE

**BRAND:** Tesla  
**MODEL:** Model Y - 78,8 kWh

**MILEAGE:** 155,455 km  
**VIN:** LRWYGCEK4NC256123

**EXECUTED BY:** FDM-AYVENS-DF-RINGSTED

**DATE AND TIME:**  
26/03/2026, 12:44

## RESULTS

### STATE OF HEALTH (SOH)

# 89.2 %

#### ENERGY

70kWh | 79kWh



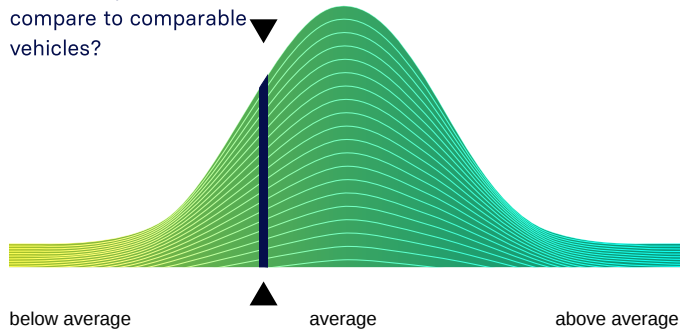
#### WLTP RANGE

555km | 622km

## RATING

### BENCHMARKING

How does your vehicle compare to comparable vehicles?



## CHECKS

- Battery Management System (BMS) ✓
- Battery Sensor ✓
- Battery Measurements ✓
- Battery Cell Voltages ✓
- Vehicle Communication ✓



## EVALUATION

### GOOD HEALTH - NO ABNORMALITIES DETECTED

Based on the detailed battery diagnostics performed with the AVILOO FLASH Test, we hereby certify that the drive battery of this vehicle is in good condition.

The drive battery is therefore officially AVILOO Certified.

Dr. Marcus Berger, CEO



### ENERGY

	Gross	Net (Nominal)	Usable
Current:	70.3kWh	70.3kWh	67.2kWh
New:	78.8kWh	78.8kWh	75.3kWh

### RANGE

	WLTP	Typical	Individual
Current:	459-555km	358km	337km
New:	514-622km	401km	378km

### EXECUTION PROTOCOL

AVILOO Box connected.	12:44:00
FLASH Test started.	✓
Vehicle detected.	✓
Starting data acquisition.	✓
Finished data acquisition.	✓
Analyzing data.	✓
Analysis completed.	✓

### SENSORS

Voltage Sensor	✓
Current Sensor	✓
Temperature Sensors	✓
Cell Voltage Sensors	✓

### BMS

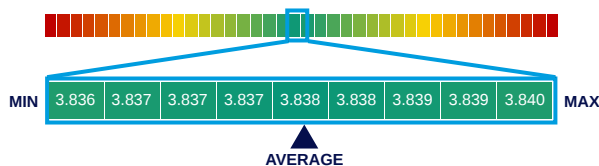
	Value	Status
BMS State of Charge (SoC)*:	53%	
SoC calculation accuracy:		✓
BMS State of Health (SoH)*:	89%	
SoH calculation accuracy:		✓

### MEASUREMENTS

	Min	Max	Delta	Status
Battery Temperature	10.0°C	10.5°C	0.5°C	✓
Cell Voltage	3.836V	3.840V	4mV	✓
Pack Voltage	368.6V			
Average Current	-3.9A			

### CELL VOLTAGES DIAGRAM

	1	2	3	4	5	6	7	8	9	10	11	12	13	14	15	16	17	18	19	20
1 - 20	3.839	3.839	3.839	3.838	3.839	3.839	3.839	3.839	3.839	3.840	3.838	3.839	3.839	3.840	3.840	3.840	3.838	3.840	3.840	3.839
21 - 40	3.840	3.840	3.840	3.838	3.838	3.838	3.838	3.838	3.838	3.838	3.838	3.839	3.838	3.838	3.838	3.838	3.838	3.838	3.838	3.838
41 - 60	3.838	3.838	3.838	3.837	3.838	3.837	3.837	3.838	3.838	3.838	3.837	3.836	3.838	3.838	3.838	3.838	3.838	3.838	3.838	3.838
61 - 80	3.837	3.838	3.838	3.839	3.838	3.837	3.839	3.838	3.838	3.838	3.836	3.838	3.838	3.840	3.839	3.839	3.839	3.839	3.839	3.839
81 - 96	3.839	3.839	3.839	3.839	3.839	3.839	3.839	3.839	3.839	3.839	3.839	3.838	3.839	3.838	3.839	3.838	/	/	/	/



\*The values shown here were not calculated by AVILOO but correspond to the values read out from the battery management system (BMS) and were calculated by the manufacturer. AVILOO therefore assumes no liability for their accuracy.

**DISCLAIMER:** The test result includes the currently calculated state of health (SoH) of the drive battery. The determination is based on data provided by the vehicle. These are evaluated by AVILOO's algorithms using statistical and analytical models. Manipulation of the data in the control unit leads to an incorrect result. The indicated SoH has a technically induced fluctuation range (deviation) of no more than 3% in at least 95% of reference measurements. It should be noted that this tolerance applies to the SoH determination at the cell level and not to the SoH of the entire battery. This is because the state of charge of individual cells may vary, which can negatively affect the current SoH of the battery. However, this can be compensated by the Battery Management System (BMS) or during a calibration. The result reflects the condition of the battery at the time of the test. No conclusions can be drawn about the future state of health of the battery from this. Statements about mechanical damage or external influences are not part of this diagnosis.