

TILSTANDSRAPPORT

Stamdata

Registreringsnummer	DV70015	Stelnummer	LRWYGCF3PC998224		
Mærke	TESLA	Model	Model Y	Version	Baghjulstræk
Karrosseritype	MPV	Farve	Blå	Reg. dato	21-09-2023
Drivkraft	El	Drivlinje	Rear wheel drive	Geartype	Automatisk
KM. stand	36799	Antal nøgler	2	Kontraktnummer	5045545
Afliveringsdato	29-04-2026				

Udvendige billeder



Dæk og mønster

Position	Mærke	Størrelse	Slidbane	Dæktype
Venstre, For	Continental	255/45-19	6 mm	Sommer
Venstre, Bag	Continental	255/45-19	7 mm	Sommer
Højre, Bag	Continental	255/45-19	7 mm	Sommer
Højre, For	Continental	255/45-19	6 mm	Sommer

Ekstra hjul

Ekstrahjul tilstede

Nej

Position	Mærke	Dæktype
Ekstrahjul		

Reservedæk og rep. kit

Rep. kit tilstede

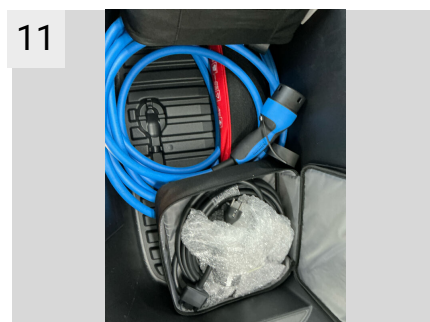
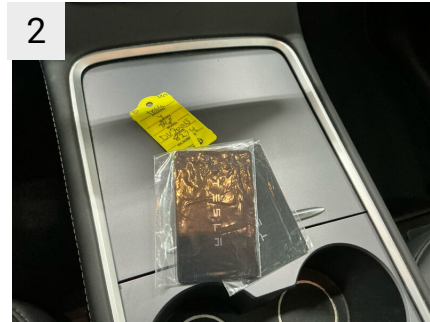
Findes ikke

Reservehjul tilstede

Ikke relevant

Position	Mærke	Størrelse	Slidbane
Reservehjul		/-	

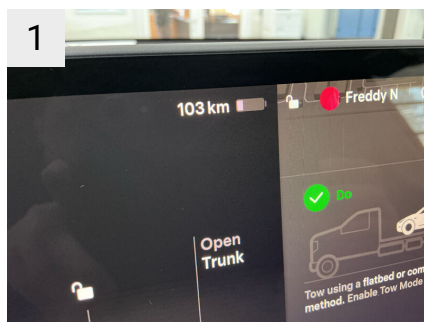
Præsentationsbilleder





Mangler / Tilstand

Ref	Sted	Del	Type	Handling
#1	Opladnings niveau	Opladning niveau under 30% eller 150km. rækkevidde	Ikke tilstrækkelig	K1



Sted	Opladnings niveau
Del	Opladning niveau under 30% eller 150km. rækkevidde
Type	Ikke tilstrækkelig



Sted	Opladnings niveau
Del	Opladning niveau under 30% eller 150km. rækkevidde
Type	Ikke tilstrækkelig

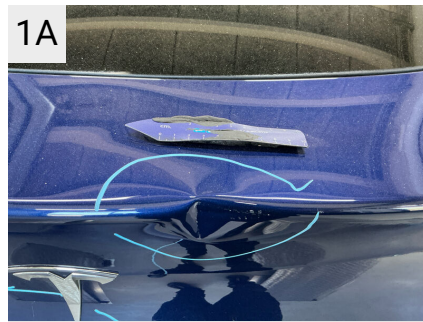
Skader

Ref	Sted	Del	Type	Handling
#1	Bagklap	Bagklap	Bulet/Ridset	K4
#2	Forrude	Rude	Stenslag	K4
#3	Front	Forkofanger	Afskrabning	K4
#4	Fælge	Fælg Venstre, For	Ridset	K4
#5	V. fordør	Dør	Bule(r)	K3
#6	Fælge	Fælg Venstre, Bag	Ridset	K3
#7	V. bagskærm	Skærm	Bule(r)	K4
#8	Bagkofanger	Kofanger	Afskrabning	K4
#9	H. bagskærm	Skærm	Bulet/Ridset	K4

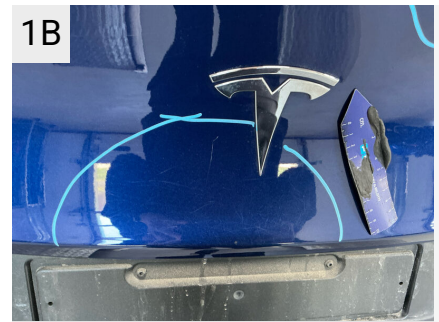
#10	Fælge	Fælg Højre, Bag	Ridset	K5
#11	H. bagdør	Dør	Bule(r)	K3
#12	H. fordør	Dør	Bule(r)	K3
#13	H. panel	Indstigning Højre Bag	Ridser	K3
#14	Fælge	Fælg Højre, For	Ridset	K5



1
 Sted Bagklap
 Del Bagklap
 Type Bulet/Ridset



1A
 Sted Bagklap
 Del Bagklap
 Type Bulet/Ridset



1B
 Sted Bagklap
 Del Bagklap
 Type Bulet/Ridset



2
 Sted Forrhude
 Del Rude
 Type Stenslag



2A
 Sted Forrhude
 Del Rude
 Type Stenslag



3
 Sted Front
 Del Forkofanger
 Type Afskrabning



3A
 Sted Front
 Del Forkofanger
 Type Afskrabning



4
 Sted Fælge
 Del Fælg Venstre, For
 Type Ridset



4A
 Sted Fælge
 Del Fælg Venstre, For
 Type Ridset



4B
 Sted Fælge
 Del Fælg Venstre, For
 Type Ridset



4C
 Sted Fælge
 Del Fælg Venstre, For
 Type Ridset



5
 Sted V. fordør
 Del Dør
 Type Bule(r)



6
 Sted Fælge
 Del Fælg Venstre, Bag
 Type Ridset



6A
 Sted Fælge
 Del Fælg Venstre, Bag
 Type Ridset



6B
 Sted Fælge
 Del Fælg Venstre, Bag
 Type Ridset



7

Sted V. bagskærm
 Del Skærm
 Type Bule(r)



7A

Sted V. bagskærm
 Del Skærm
 Type Bule(r)



8

Sted Bagkofanger
 Del Kofanger
 Type Afskrabning



8A

Sted Bagkofanger
 Del Kofanger
 Type Afskrabning



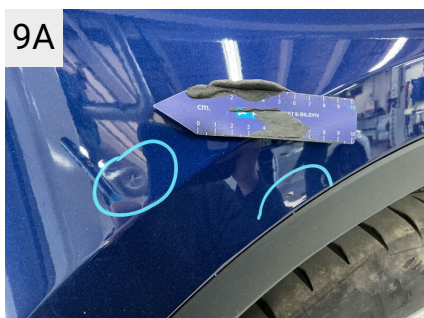
8B

Sted Bagkofanger
 Del Kofanger
 Type Afskrabning



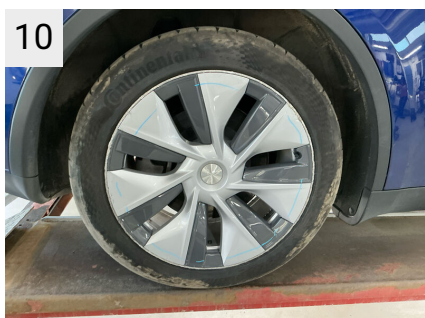
9

Sted H. bagskærm
 Del Skærm
 Type Bulet/Ridset



9A

Sted H. bagskærm
 Del Skærm
 Type Bulet/Ridset



10

Sted Fælge
 Del Fælg Højre, Bag
 Type Ridset

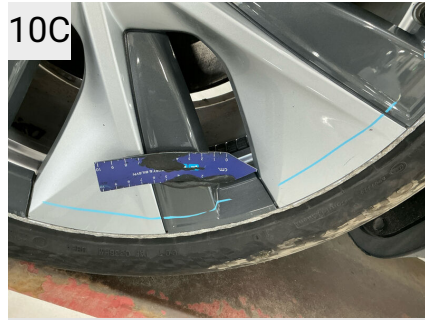


10A

Sted Fælge
 Del Fælg Højre, Bag
 Type Ridset



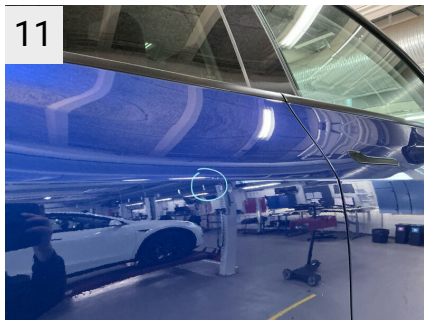
10B
 Sted Fælge
 Del Fælg Højre, Bag
 Type Ridset



10C
 Sted Fælge
 Del Fælg Højre, Bag
 Type Ridset



10D
 Sted Fælge
 Del Fælg Højre, Bag
 Type Ridset



11
 Sted H. bagdør
 Del Dør
 Type Bule(r)



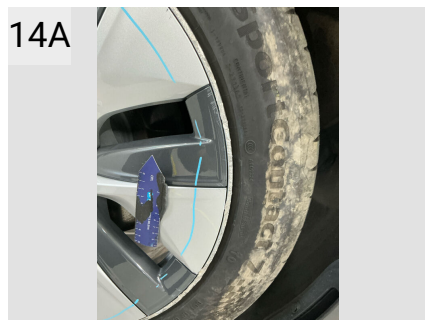
12
 Sted H. fordør
 Del Dør
 Type Bule(r)



13
 Sted H. panel
 Del Indstigning Højre Bag
 Type Ridser



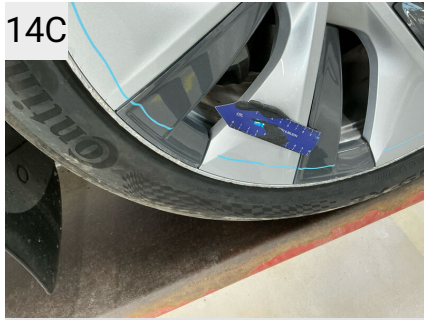
14
 Sted Fælge
 Del Fælg Højre, For
 Type Ridset



14A
 Sted Fælge
 Del Fælg Højre, For
 Type Ridset



14B
 Sted Fælge
 Del Fælg Højre, For
 Type Ridset



14C

Sted	Fælge
Del	Fælg Højre, For
Type	Ridset



14D

Sted	Fælge
Del	Fælg Højre, For
Type	Ridset

Evt. Mekaniske fejl

Bemærkninger vedr. mekaniske fejl

Fabriksudstyr

Deep Blue Metallic

INDEPENDENT BATTERY CERTIFICATE



CERTIFICATE NUMBER: B0E77353-DC22-4C25-91FC-5722A00220BF

VEHICLE

BRAND: Tesla
MODEL: Model Y - 60,5 kWh

MILEAGE: 36,799 km
VIN: LRWYGCF3PC998224

EXECUTED BY: FDM-AYVENS-
BALLERUP

DATE AND TIME:
01/05/2026, 08:56

RESULTS

Independent
STATE OF HEALTH (SOH)

96.4 %

ENERGY 58kWh | 61kWh

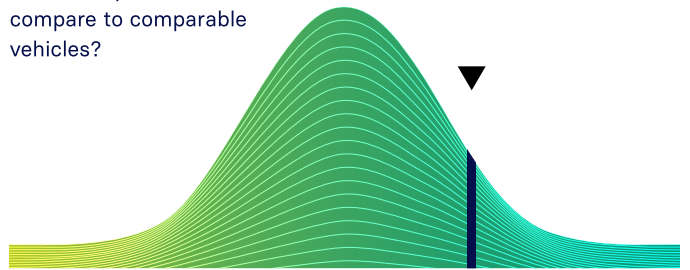


WLTP RANGE 482km | 500km

RATING

BENCHMARKING

How does your vehicle compare to comparable vehicles?



below average

average

above average

CHECKS

- Battery Management System (BMS) ✓
- Battery Sensor ✓
- Battery Measurements ✓
- Battery Cell Voltages ✓
- Vehicle Communication ✓



SCAN FOR DETAILS

EVALUATION

EXCELLENT HEALTH - NO ABNORMALITIES DETECTED

Based on the detailed battery diagnostics performed with the AVILOO FLASH Test, we hereby certify that the drive battery of this vehicle is in excellent condition.

The drive battery is therefore officially AVILOO Certified.

Marcus Berger

Dr. Marcus Berger, CEO



ENERGY

	Gross	Net (Nominal)	Usable
Current:	58.3kWh	58.3kWh	55.6kWh
New:	60.5kWh	60.5kWh	57.7kWh

RANGE

	WLTP	Typical	Individual
Current:	438-482km	333km	274km
New:	455-500km	345km	285km

EXECUTION PROTOCOL

AVILOO Box connected.	08:56:14
FLASH Test started.	✓
Vehicle detected.	✓
Starting data acquisition.	✓
Finished data acquisition.	✓
Analyzing data.	✓
Analysis completed.	✓

SENSORS

Voltage Sensor	✓
Current Sensor	✓
Temperature Sensors	✓
Cell Voltage Sensors	✓

BMS

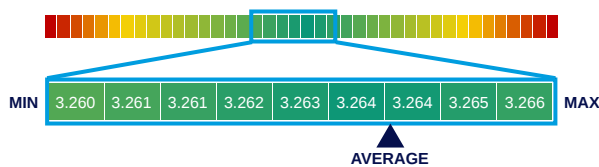
	Value	Status
BMS State of Charge (SoC)*:	24%	
SoC calculation accuracy:		✓
BMS State of Health (SoH)*:	97%	
SoH calculation accuracy:		✓

MEASUREMENTS

	Min	Max	Delta	Status
Battery Temperature	10.5°C	11.0°C	0.5°C	✓
Cell Voltage	3.260V	3.266V	6mV	✓
Pack Voltage	352.2V			
Average Current	-0.9A			

CELL VOLTAGES DIAGRAM

	1	2	3	4	5	6	7	8	9	10	11	12	13	14	15	16	17	18	19	20
1 - 20	3.263	3.263	3.264	3.263	3.263	3.263	3.264	3.262	3.264	3.264	3.265	3.264	3.263	3.264	3.264	3.264	3.264	3.264	3.264	3.263
21 - 40	3.263	3.264	3.264	3.264	3.265	3.264	3.261	3.262	3.264	3.261	3.263	3.264	3.265	3.263	3.263	3.261	3.262	3.264	3.263	3.264
41 - 60	3.264	3.264	3.266	3.264	3.264	3.264	3.264	3.263	3.262	3.264	3.264	3.264	3.262	3.262	3.262	3.264	3.265	3.262	3.263	3.264
61 - 80	3.264	3.265	3.264	3.263	3.263	3.263	3.264	3.264	3.263	3.264	3.264	3.264	3.262	3.264	3.264	3.262	3.262	3.264	3.263	3.264
81 - 100	3.263	3.264	3.263	3.263	3.263	3.263	3.263	3.263	3.262	3.263	3.260	3.263	3.262	3.264	3.264	3.263	3.264	3.263	3.264	3.264
101 - 108	3.262	3.262	3.262	3.264	3.264	3.264	3.262	3.263	/	/	/	/	/	/	/	/	/	/	/	/



*The values shown here were read directly from the vehicle's battery management system (BMS) and are calculated and provided by the vehicle manufacturer. The State of Health (SoH) displayed corresponds to the value reported by the BMS and is CARA-certified.

DISCLAIMER: The test result includes the currently calculated state of health (SoH) of the drive battery. The determination is based on data provided by the vehicle. These are evaluated by AVILOO's algorithms using statistical and analytical models. Manipulation of the data in the control unit leads to an incorrect result. The indicated SoH has a technically induced fluctuation range (deviation) of no more than 3% in at least 95% of reference measurements. It should be noted that this tolerance applies to the SoH determination at the cell level and not to the SoH of the entire battery. This is because the state of charge of individual cells may vary, which can negatively affect the current SoH of the battery. However, this can be compensated by the Battery Management System (BMS) or during a calibration. The result reflects the condition of the battery at the time of the test. No conclusions can be drawn about the future state of health of the battery from this. Statements about mechanical damage or external influences are not part of this diagnosis.